

# SLIDING DOOR SYSTEMS: INSTALLATION INSTRUCTIONS

## LIGHTING PROFILES

Assembly  easy medium difficult \*

\*Base for the degree of difficulty is a standard sliding door without slant.  
This is to be classified as ,easy' in respect to production and installation.

**raumplus**

# INDEX\_

6<sup>th</sup> edition Bremen, August 2006

## **General information / Tools**\_page 3

## **Preparation**\_page 3

## **Technical terms**\_pages 4-7

A\_Lighting profile and aluminium / plastic covers

B\_LED spots chrome matte

C\_LED-spot with 9 single LED's integrated

D\_Halogen spots matt

E\_Built-in lamp: LLA 112

F\_Mini fluorescent lamp

G\_Sensor switch incl. switch relay

H\_Touch sensitive switch

## **Assembly / Installation**\_pages 7-10

A\_Top track installation

B\_Lighting profile and plastic / aluminium cover cut to size

C\_Lighting profile installation

D\_Mounting lamps with aluminium covers

E\_Special case- sensor

F\_Unterbaulampe mit der Plexiabdeckung anbringen

# \_GENERAL INFORMATION / TOOLS / PREPARATION

## ASSEMBLY INSTRUCTIONS LIGHTING PROFILES:

### GENERAL INFORMATION

In order to mount various types of lamps **raumplus** offers a lighting profile. This profile can either be mounted in front of or behind the top track and provides plenty of space for the placement of cables. We offer 5 different standard lamps that can be installed into the lighting profile. Moreover, you may also install lamps from other manufacturers as well.

These directions were created by people for people. We have made an effort to develop the instructions and pictures so that they are logical and easy to understand. If you should nevertheless find something to be unclear, please let us know so that we may revise that section.

**Technical details are subject to change.**

### TOOLS:

Phillips screwdriver

Hole saw and milling cutter (generally the aluminium cover is delivered prefabricated and therefore both tools are not necessary)

Drill

Metal saw

Pencil

### PREPARATION:

#### IMPORTANT:

After unpacking and checking to see if all items are intact and accounted for you may begin with the installation.

**The connection to the electrical network is not installed by raumplus.**

**Changes in electrical connections and current-carrying cables are only to be performed by licensed professionals!**

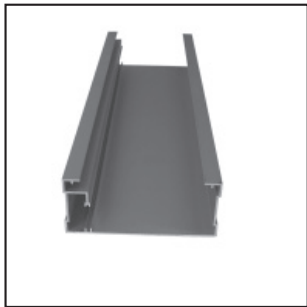
**Adhere to the installation regulations VDE 0100.**

**The company raumplus assumes no responsibility for injury or damages due to improper installation!!!**

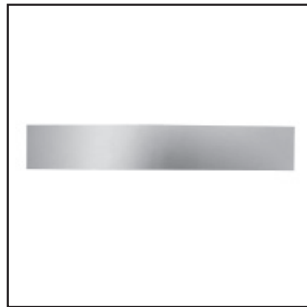
**A combination of LED-spots and halogen spots on one transformer is not possible!**

# \_TECHNICAL TERMS

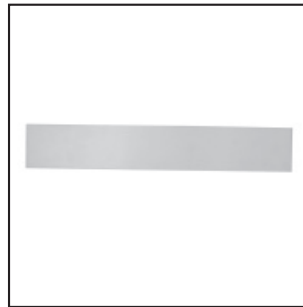
## A\_LIGHTING PROFILE AND ALUMINIUM / PLASTIC COVERS:



1\_



2\_



3\_

**1\_Lighting profile (85.01.020)**\_mounted on the ceiling in front of or behind the top track. There is a web or strip on one side for the cords of the lights to run.

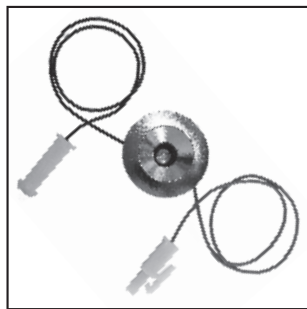
**2\_Aluminium cover (85.10.020)**\_4 mm thick. This is used for halogen insert lights, single LED's, mini fluorescent lights and LED-insert lights.

**3\_Plastic cover (85.10.030)**\_the plastic cover is used for fluorescent lights. Both covers are inserted into the lighting profile.

## B\_LED SPOT CHROME MATT:



1\_



2\_



3\_



4\_

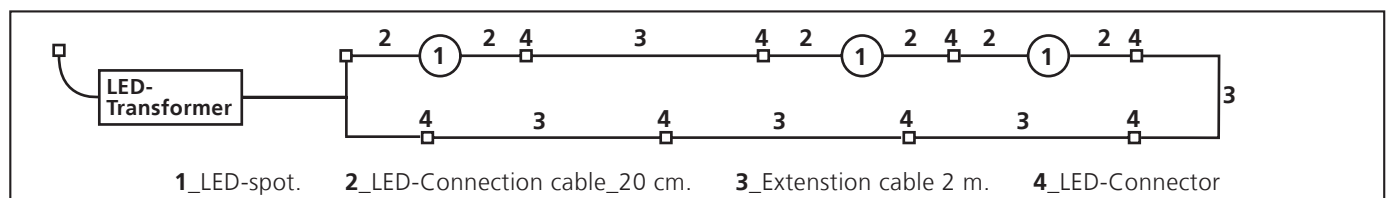
**1\_ and 2\_LED-spot chrome matte (10.40.010), 2 x approx. 20 cm connection cable**\_Can be inset in the aluminum cover of the lighting profile (boring  $\varnothing$  25 mm – inset depth 11 mm).

### Accessories for LED-spot chrome matte:

**3\_LED-Transformer (10.40.020), 2 m connection cable**\_up to 8 LED's a 1 W may be installed in a row.

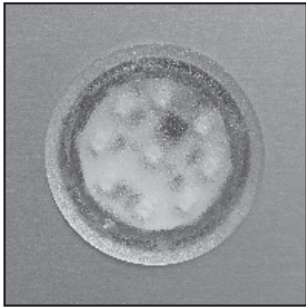
**4\_Extension cable (10.40.040)**\_2 m

Installation example with 3 LED's and 5 extension cables



# \_TECHNICAL TERMS

## C\_LED-SPOT WITH 9 SINGLE LED'S, INTEGRATED:



1\_



2\_

**1\_LED-Spot with 9 integrated single-LED's (10.41.010), 5 m Connection cable**\_Is inserted into the aluminum cover through a 35 mm boring.

### Accessories for LED-Spot:

**2\_LED-Transformer (10.41.020), 2 m connection cable**\_Up to 6 LED-Spot's can be connected to the splitter.

## D\_HALOGEN SPOTS:



1\_



2\_

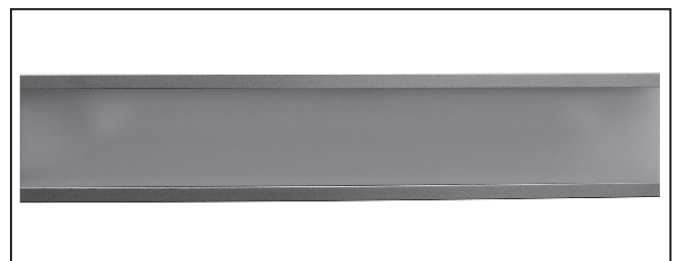
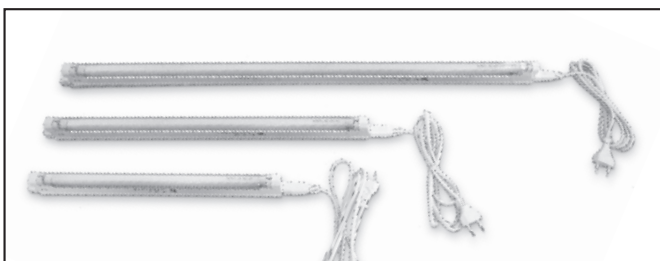
**Halogen spot (10.42.010)**\_ Is inserted into the aluminum cover through a 57 - 59 mm boring.

### Includes:

**1\_6** Halogen spots matte 20 W with a 2 m connection cable.

**2\_Halogen-Transformer with 6 splitter** and a 4,5 m connection cable. One to six Halogen spots can be connected.

## E\_BUILT-IN LAMP: LLA 112



**Built-in lamp**\_These flourescent lamps come in lengths of: 394 mm, 8 Watt (**10.44.010**), 524 mm, 16 Watt (**10.44.020**) and 814 mm, 30 Watt (**10.44.030**), plus 50 mm outlet length. The lamps have connection cables but can also be connected directly with one another. This way up to six lights can be connected together.

The lights in the lighting profile are attached with double-sided mirror tape (**25.12.046**).

A plexi cover is inside the lighting profile for coverage

# \_TECHNICAL TERMS

## F\_MINI FLUORESCENT LAMP (TUBE) T2:



**\_Mini fluorescent lamp (tube) T2\_** this has a 1 m connection cable on both sides that leads to the series connection unit. It can be milled into the aluminium cover of the lighting profile (notch width 14 mm) or utilized in the 25 mm interior system. The series connection unit with 1.5 m input lead is included in the price of the mini fluorescent lamp T2. **When connecting the cables pay attention to the colour of the cables.** The connector plug from the series connection unit is smaller so that not too much space is lost during the mounting of the lighting profile.

**There are 2 lengths:** Mini fluorescent lamp T2, 8 W, 360 mm (**10.43.010**) and mini fluorescent lamp T2, 13 W, 560 mm (**10.43.020**).

### Accessories for mini fluorescent lamp T2:

In order to come up to the size of a standardized European plug, a 4,5 m connection cable with 6-way splitter (**10.43.030**) is required. Cable extension (**10.44.050**).

## G\_SENSOR SWITCH INCL. SWITCH RELAY:



1\_



2\_



In order to forgo the normal contact switch, sensors can be used that are connected to a switch relay.

**1\_Sensor switch (longish), incl. switch relay (10.49.020).**

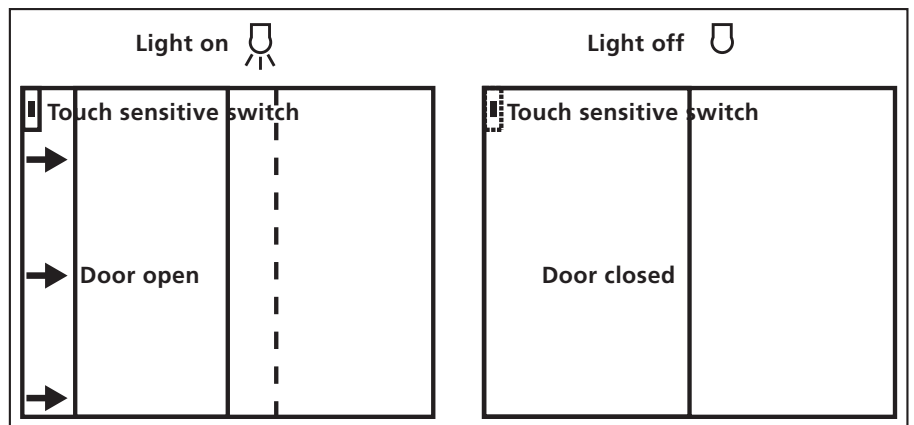
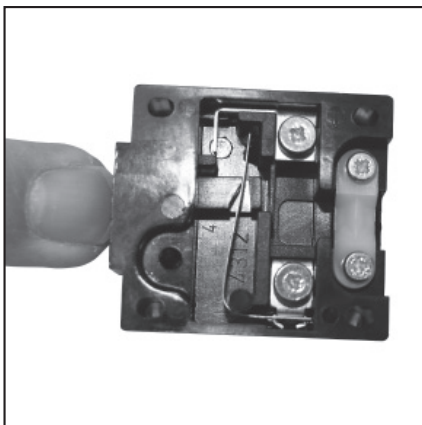
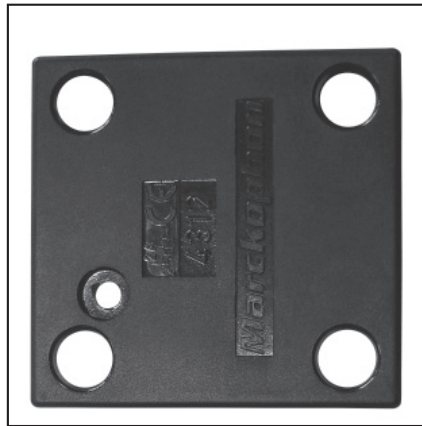
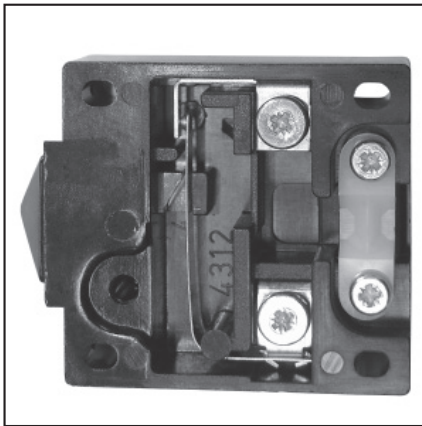
**2\_Sensor switch (round), incl. switch relay (10.49.030).**

### Including:

**3\_Power plug for the lighting\_** is put into the connection of the switch relay. The switch relay has the corresponding power plug for the power outlet. The sensor is connected to the switch relay using an approx. 3 m connection cable. The sensor can be mounted to the side of the closet, for example. The range of the sensor is between 1-15 cm.

# \_TECHNICAL TERMS / INSTALLATION

## H\_TOUCH SENSITIVE SWITCH:



### The touch sensitive switch is only applicable for one to two doors.

The lighting is activated on or off by the movement of the doors. To do so the touch sensitive switch is attached to the end of the sliding door so that when the door is closed there is contact and the electric circuit is disconnected. When the door is opened the electric circuit is then connected and the light turns on. This switch is only to be installed by a licensed electrician.

**PLEASE NOTE: The connection to the electrical network is not installed by raumplus. Changes in electrical connections and current-carrying cables are only to be performed by licensed professionals!**

## INSTALLATION:

Detailed descriptions of the individual assembly steps are found in the following sections. It is important to follow the steps to avoid damage to the product.

# **\_ASSEMBLY / INSTALLATION**

## **A\_TOP TRACK INSTALLATION:**



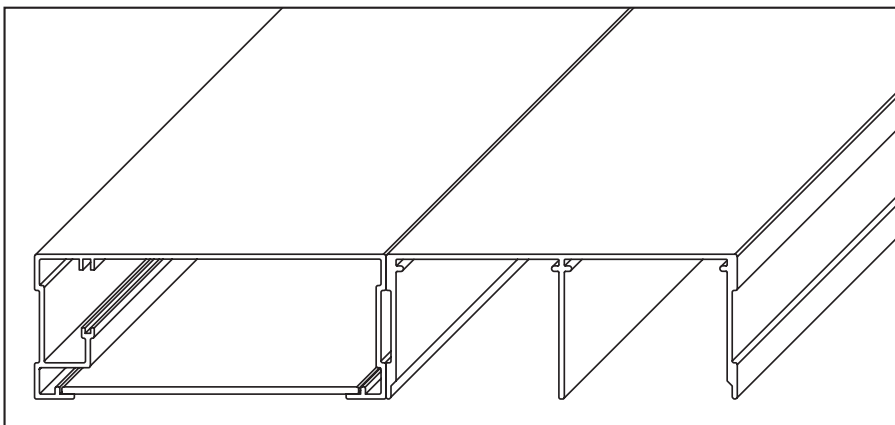
- 1**\_First, cut the top tracks to the appropriate size with an aluminium saw, for example (top tracks are delivered with approx. 10 cm excess length).
- 2**\_Mark the drill holes using the top tracks.
- 3**\_Drill holes with a 5 mm drill / attach the top tracks with two 4,5 x 50 mm screws each per running meter.

## **B\_LIGHTING PROFILE AND PLASTIC / ALUMINIUM COVER CUT TO SIZE:**

Cut the lighting profile with an aluminium saw exactly like the top track and drill holes for mounting.

Cut the plastic / aluminium covers to the required size. In the aluminium covers either holes for the lamps are drilled or holes for the fluorescent lights are milled (generally the aluminium cover is delivered prefabricated and therefore both tools are not necessary).

## **C\_LIGHTING PROFILE INSTALLATION:**



Mount the lighting profile directly in front of the top tracks (left lighting profile, right top tracks).

# **\_ASSEMBLY / INSTALLATION**

## **D\_ MOUNTING LAMPS WITH ALUMINIUM COVERS:**



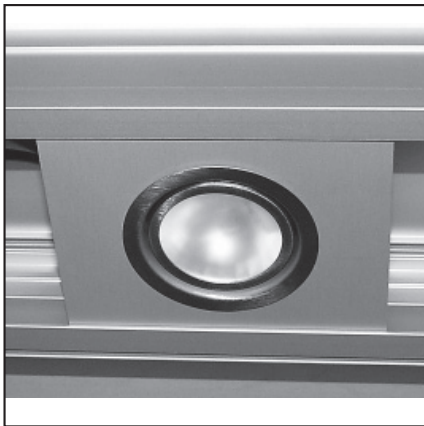
**1\_**



**2\_**



**3\_**



**4\_**

**1\_** First screw the lighting profile onto the ceiling (like the top track).

**2\_** Insert the round or oblong lights in the pre-drilled or pre-milled holes and affix the cable to the cover.

**3\_** Afterwards insert the aluminium cover with the lights into the profile.

## **E\_ SPECIAL CASE- SENSOR:**

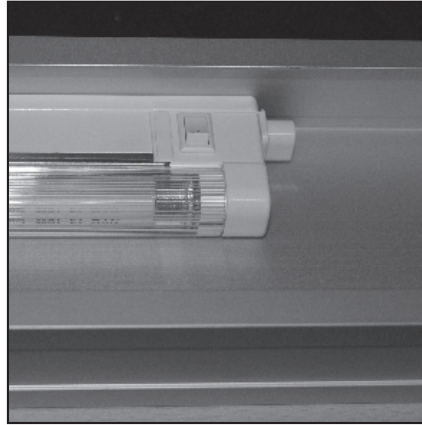
The sensor is placed in the desired location and provides the option of turning the light on or off with the movement of your hand.

# \_ASSEMBLY / INSTALLATION

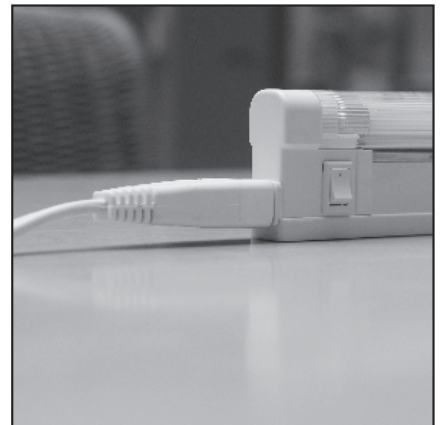
## F\_ATTACH BUILT-IN LAMP WITH THE PLEXI COVER:



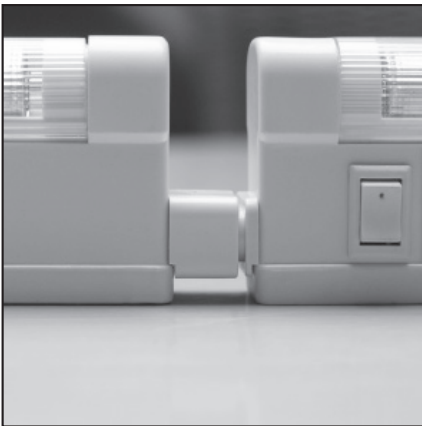
1\_



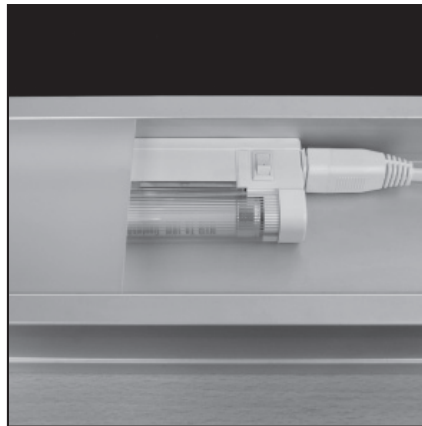
2\_



3\_



4\_



5\_

1\_ First, screw the lighting profile to the ceiling.

2\_ Attach the fluorescent lamp with the double-sided tape (on the inside of the narrow side) across from the cable channel of the lighting profile (picture 1 and 2).

3\_ Cable the fluorescent lamp in the lighting profile or connect the lamps to one another using the connector (picture 3 and 4). Minor differences in brightness of lamps with different lengths are possible.

In case you can see the cables through the plexiglass, stow the cables in the designated cable channel in the lighting profile.

4\_ Finally, place the plexi cover inside the lighting profile.

Examples for the calculation of multiple consecutive fluorescent lamps:

$$\begin{aligned} & 394 \text{ mm Lamp } 10.44.010 \\ + & 524 \text{ mm Lamp } 10.44.020 \\ - & 10 \text{ mm connection adjustment} \\ + & 814 \text{ mm Lamp } 10.44.030 \\ - & 10 \text{ mm connection adjustment} \\ + & 50 \text{ mm outlet (cable connection)} \\ - & 10 \text{ mm connection adjustment} \\ \hline = & 1752 \text{ mm total length.} \end{aligned}$$