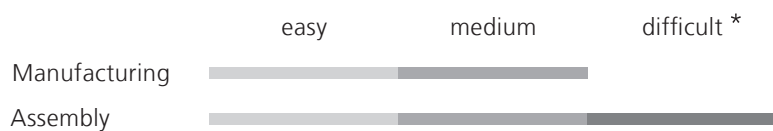


SLIDING DOOR SYSTEMS: ASSEMBLY INSTRUCTIONS

SERIES 400, 410 AND 420



*Base for the degree of difficulty is a standard sliding door without slant.
This is to be classified as "easy" in respect of production and installation.

raumplus

INDEX_

5th edition Bremen, January 2006

General information / Tools_page 3

Technical terms_page 4

Preparation / Assembly_pages 5-7

A_Cut frame profiles to size

B_Cut panel to size

C_Mount top and bottom roller connection to the vertical profile

D_Attach vertical profile to the panel

Disassembly of a 400, 410 or 420 frame_page 7

Detail drawings_pages 8-16

_GENERAL INFORMATION / TOOLS

ASSEMBLY INSTRUCTIONS SLIDING DOOR SYSTEM:

GENERAL INFORMATION

raumplus sliding door systems offer a wide range of variety and versatility. There are systems with and without bottom tracks, a great number of panel variations, doors for sloped ceilings and corner solutions or doors for special application purposes (lockable, application as room divider etc.). In order to install the sliding doors that have been assembled according to these directions, please refer to the installation instructions.

These directions were created by people for people. We have made an effort to develop the instructions and pictures so that they are logical and easy to understand. If you should nevertheless find something to be unclear, please let us know so that we may revise that section.

Technical details are subject to change.

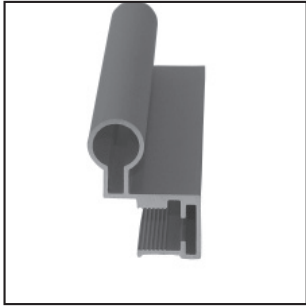
Please check to see if you received all items by checking the delivery sheet. Please also look out for possible transport damages. In case of any damage please contact your supplier immediately. The single components are numbered on the detail drawing as well as on the delivery sheet – please check.

REMARKS: First of all please read our measurement instructions, in order to find the correct measures.

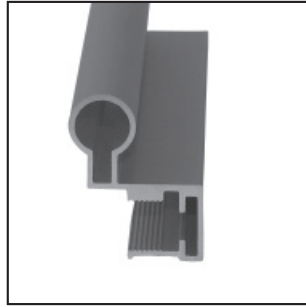
TOOLS:

Rubber mallet
Small hammer
Metal saw

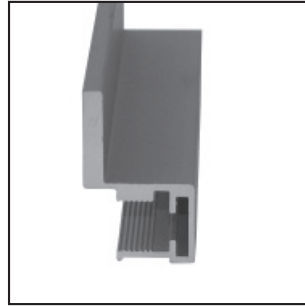
TECHNICAL TERMS



1_



2_



3_



4_



5_



6_



7_



8_



9_

Tools and accessories:

Rubber mallet to attach the profile to the filling.

Cutter or blade to cut the corners of the gasket (if it is used).

Dust excluding brush to protect the doors when opening / closing and when the doors meet onto the outer sides.

The dust excluding brush is not needed until the final installation!

1_Vertical profile S400 (16.01.022)_two vertical profiles per door, one on the left and one on the right.

2_Vertical profile S410 (16.10.022)_two vertical profiles per door, one on the left and one on the right.

3_Vertical profile S420 (16.20.022)_two vertical profiles per door, one on the left and one on the right.

4_Top rail (16.02.020)_makes the frame for the door together with vertical profiles and bottom rail.

5_Bottom rail (16.04.020)_makes the frame for the door together with vertical profiles and bottom rail.

6_and 7_Top connector (10.16.012 left / 10.16.014 right)_is attached to the top profile.

8_and 9_Bottom connector with Antijump (10.16.022 left / 10.16.024 right)_is attached to the bottom vertical profile.

Gasket 4 mm (10.17.035)_

_PREPARATION / ASSEMBLY

PREPARATION:

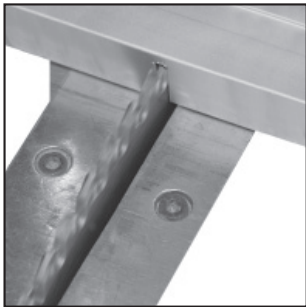
After having unpacked and checked all items you can start your assembly work. We recommend reading these instructions carefully before starting.

When setting the doors temporarily aside, only lean the assembled doors on their lateral frame profiles (leaned on their side)– NEVER stand them straight up on the bottom rails. This may damage the rollers!

ASSEMBLY:

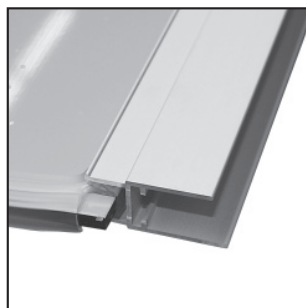
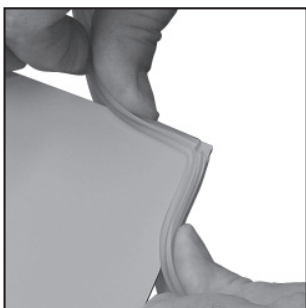
You will find detailed descriptions of the assembly steps in the following chapters. It is important that you follow these steps in correct order otherwise your sliding door system could get damaged. Work in any case with high accuracy.

A_CUT FRAME PROFILE TO SIZE:



- 1_Mark the points to be cut.
- 2_Cut the profiles using a mitre saw. In order to properly determine the measures, keep in mind that the bottom rail fits inside the vertical profile.
- 3_Clean the cut surfaces carefully.
- 4_If an attached dividing rail is used, cut it to size (same procedure as bottom rail less 2 mm).

B_CUT PANEL TO SIZE:



Lay the panel on the table.

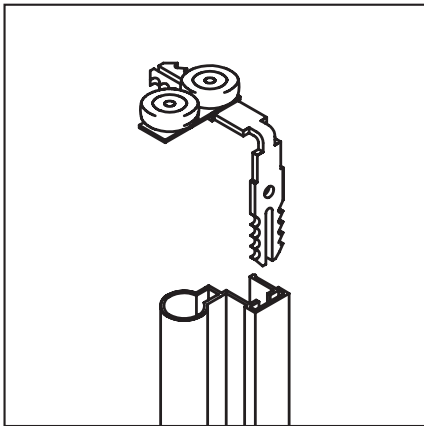
Special case: Only for glass and mirror panels: Span the gasket around the glass; the gasket must be stretched taut around the panel. To do this you should begin in the centre of the top rail. For the corner, cut an approx. 2 mm deep notch into the gasket and stretch the gasket over the corner. Then attach the bottom rail and, using a rubber mallet, make sure it is on tight.

Important: You must make sure that the higher side is in the front (in the right picture this side is facing down).

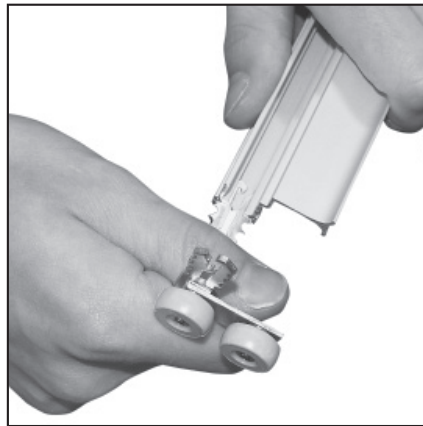
When you tap the top and bottom rails to the panel, please keep in mind the excess length left and right. What is important is that the profile rests taut on the panel.

_ASSEMBLY / INSTALLATION

C_MOUNT TOP AND BOTTOM ROLLER CONNECTION TO THE VERTICAL PROFILE:



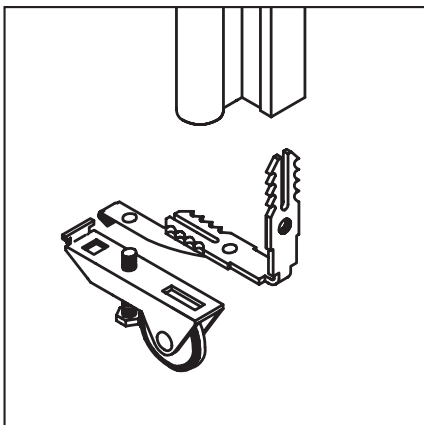
1_



2_



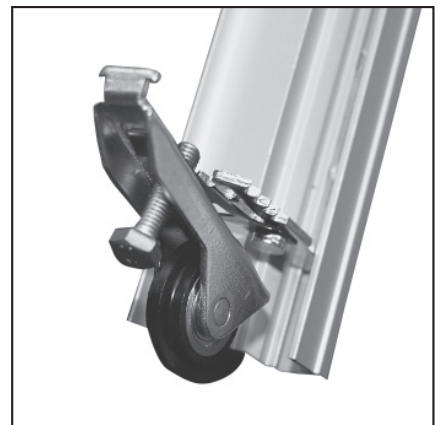
3_



4_



5_



6_

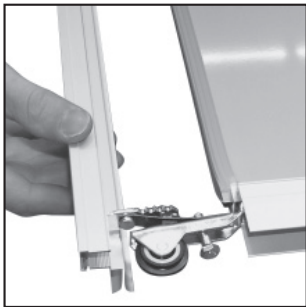
_Lay the vertical profiles in pairs on the assembly table. You save yourself the following work when you clamp the profiles using an adjustable clamp.

Carefully strike the top and bottom roller connectors flush into the ends of the vertical profile (use a small hammer, see picture 3).

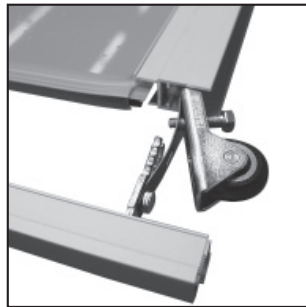
Place the corner connector in the correct position. **The top connector is 2 mm and the bottom connectors 22 mm (see picture 2 and 6_).**

_ASSEMBLY / DISASSEMBLY

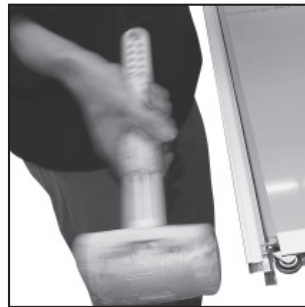
D_ATTACH THE VERTICAL PROFILE TO THE PANEL:



1_



2_



3_



4_

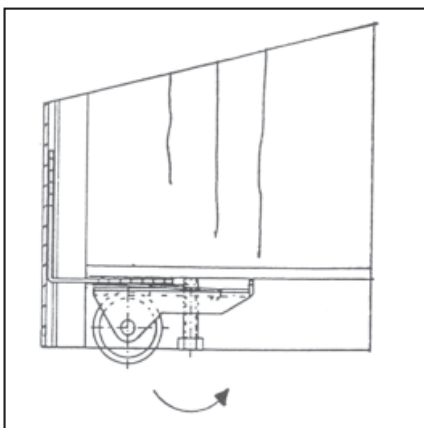
Now connect the frame by pushing the horizontal parts of the corner connector into the flat chambers of the rail (see picture 1).

_The more evenly you join the frame, the better the joints of the corner connections will close.

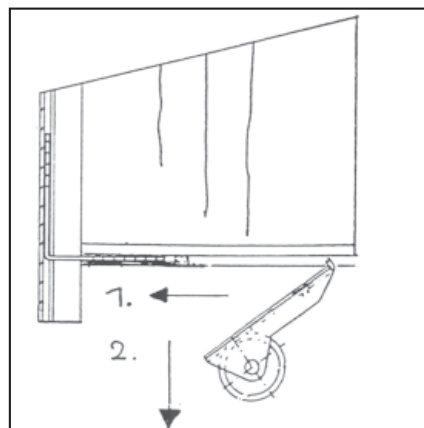
_It is also important that the vertical profiles of the assembled door are straight. Bent profiles are the reason for a poor or uneven connection with the wall.

_In order to adjust the height of the sliding doors; use an 8 mm open-ended wrench to adjust the screws.

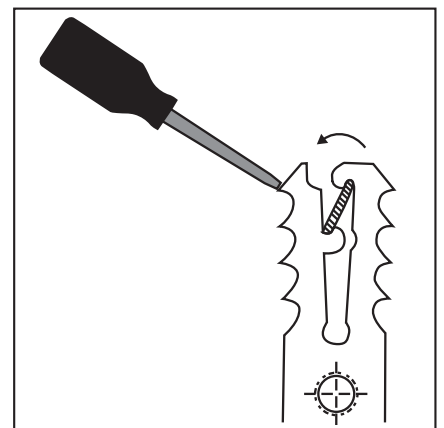
DISASSEMBLY OF A 400, 410 OR 420 SLIDING DOOR FRAME:



1_



2_



3_

Lay the door flat on the assembly table and completely unscrew the adjustment screws so that you can separate the roller housing from the steel spring (see picture 1 and 2_).

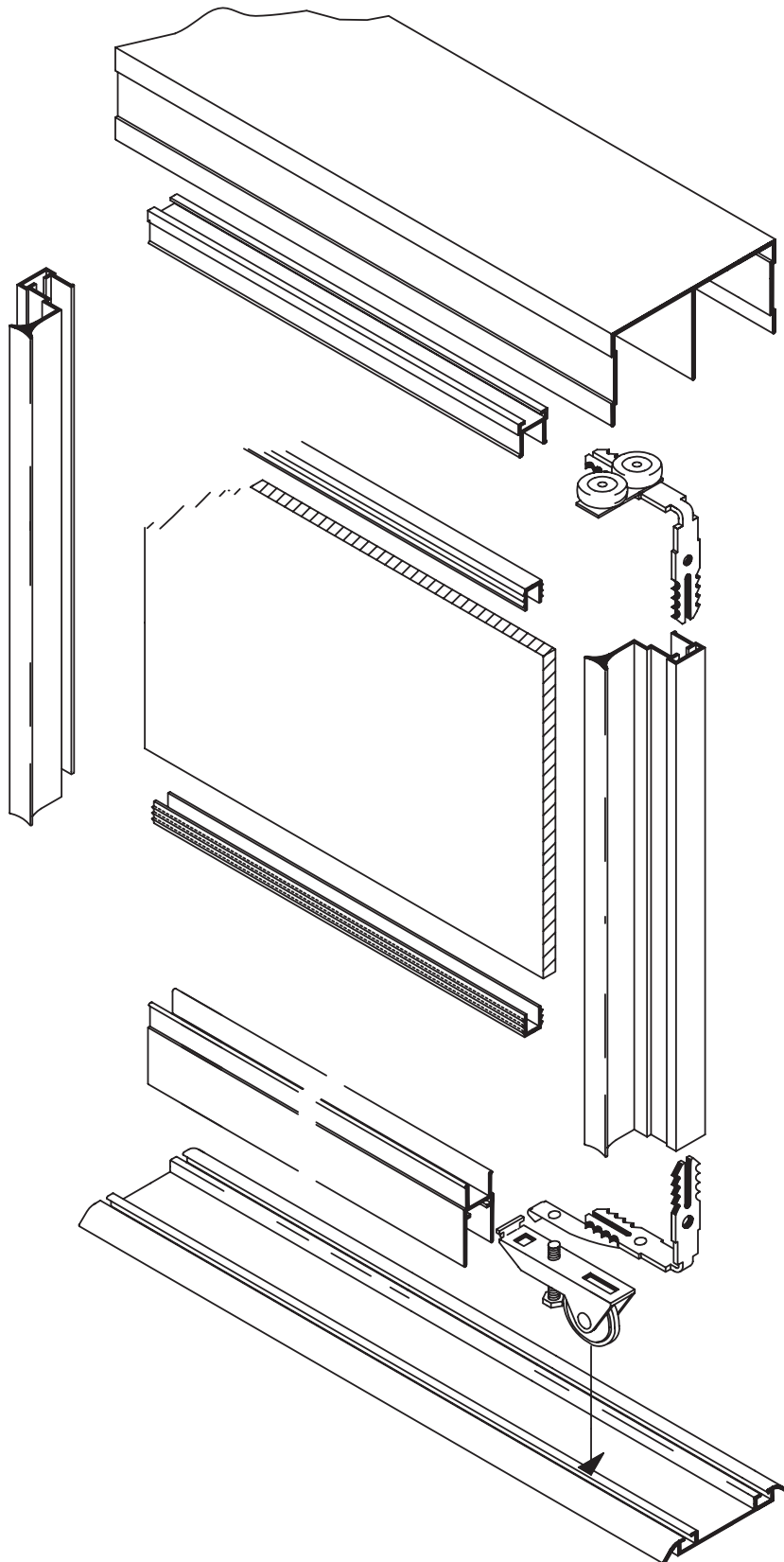
_Push the rollers all the way towards the outside, (approx. 3-4 mm) and pull them downwards and towards the side of the door.

Now you need a manual 4 mm Screwdriver (see picture 3), with which you can tighten the gaps between parts of the top corner connector.

_At the same time, knock the vertical profile off of the rail. If you put a piece of wood between them, the aluminium profiles will not get damaged.

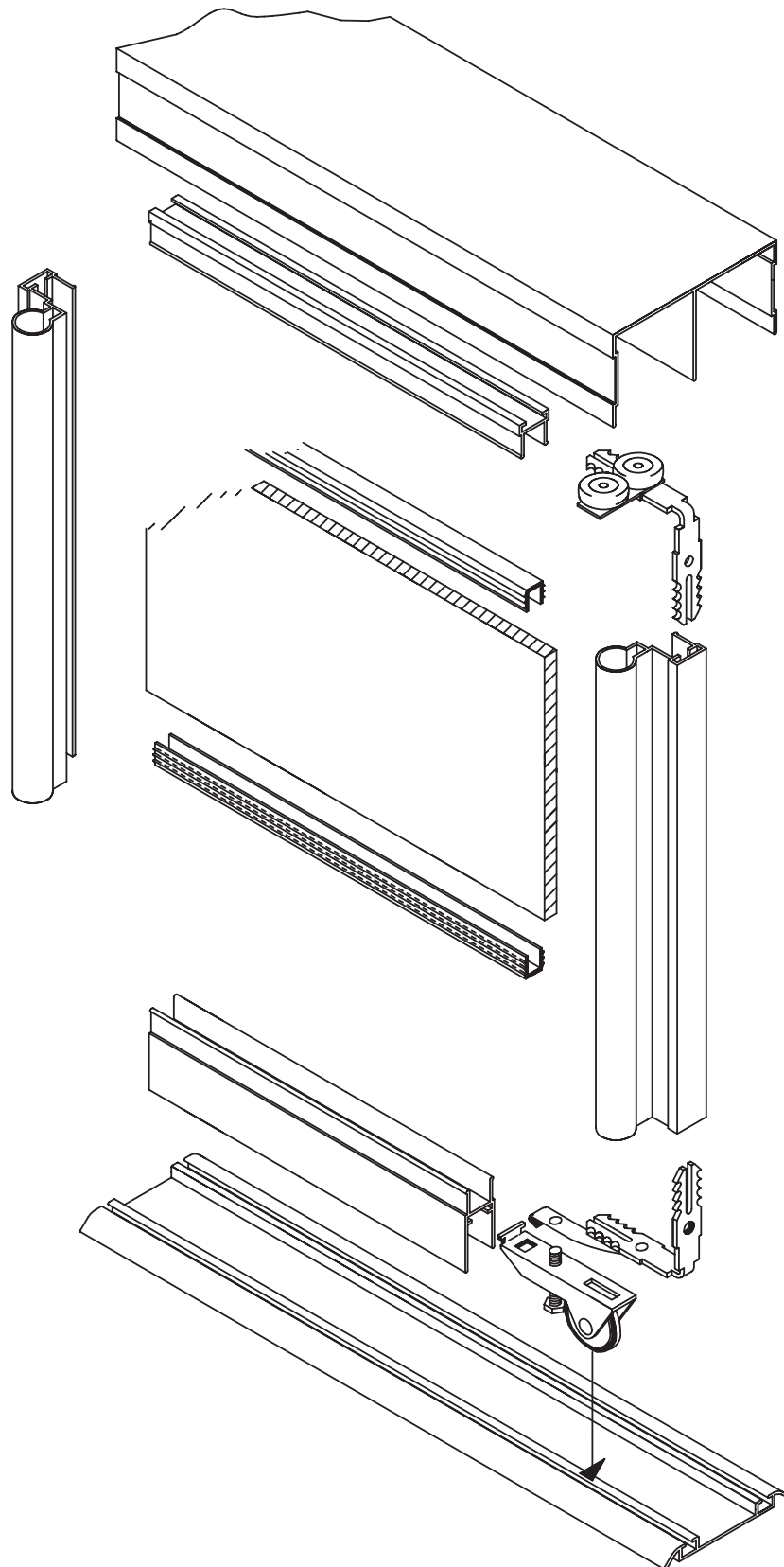
_DETAIL DRAWINGS

ISOMETRIC VIEW S400



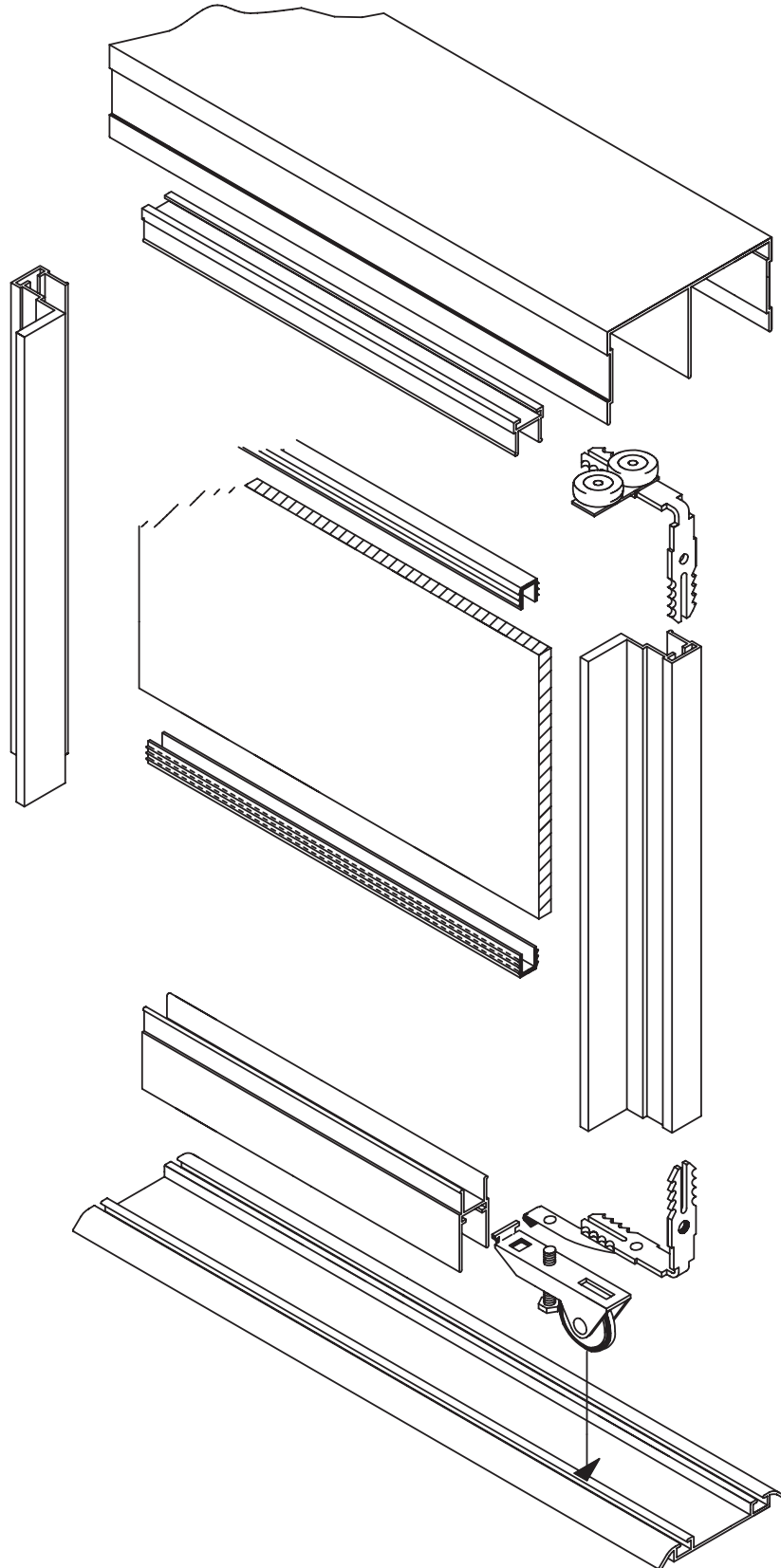
_DETAIL DRAWINGS

ISOMETRIC VIEW S410



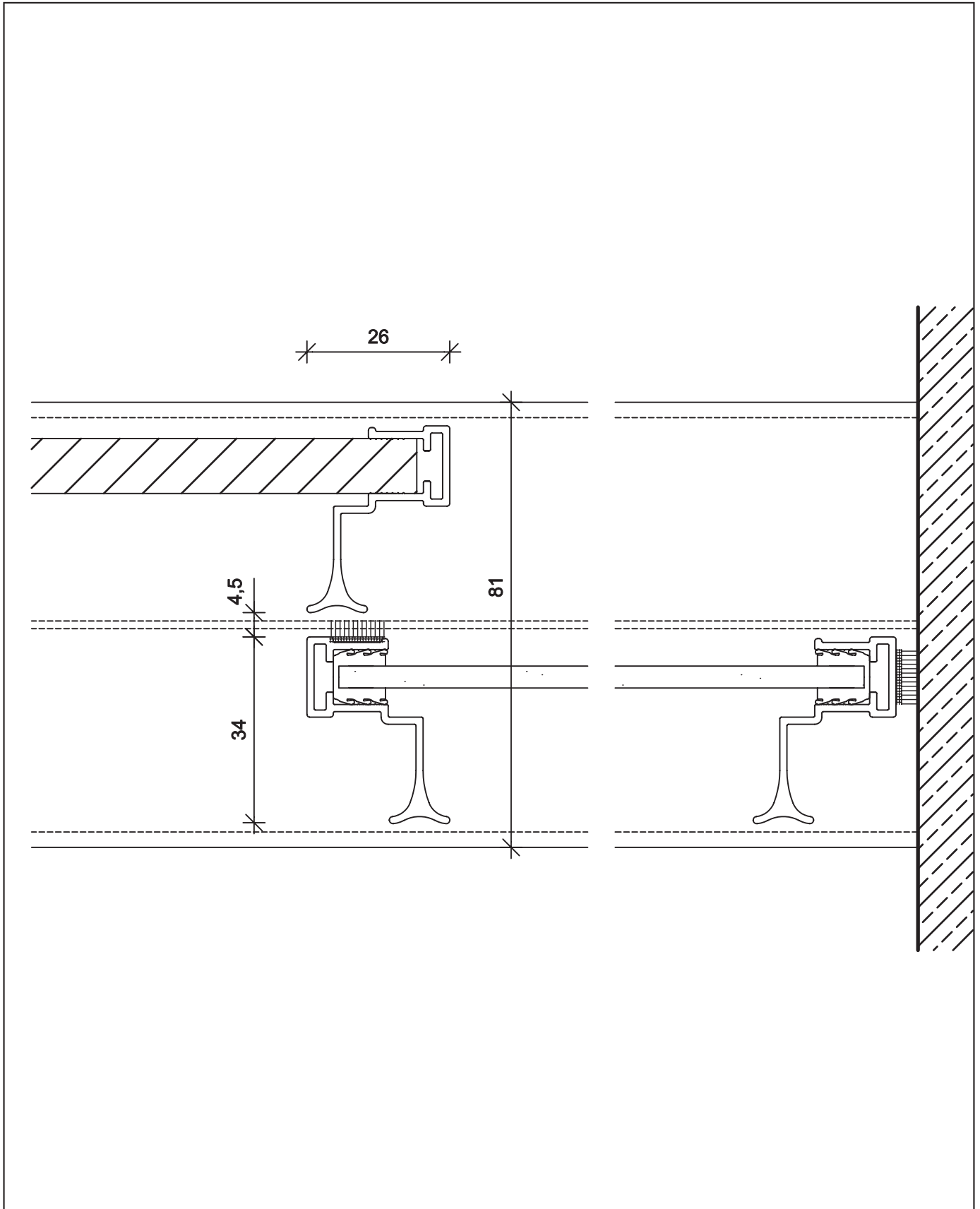
DETAIL DRAWINGS

ISOMETRIC VIEW S420



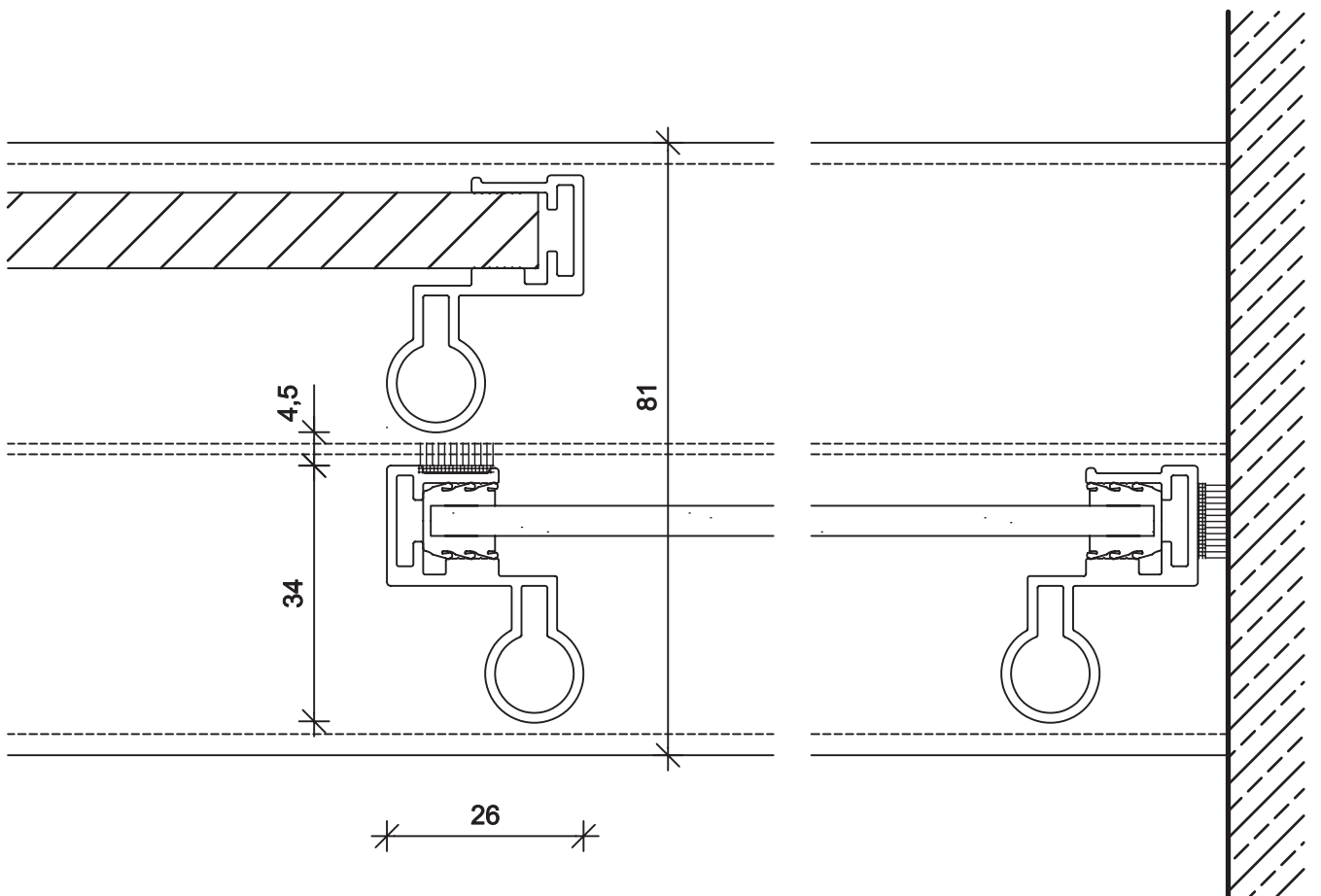
_DETAIL DRAWING

CROSS SECTION HORIZONTAL S400



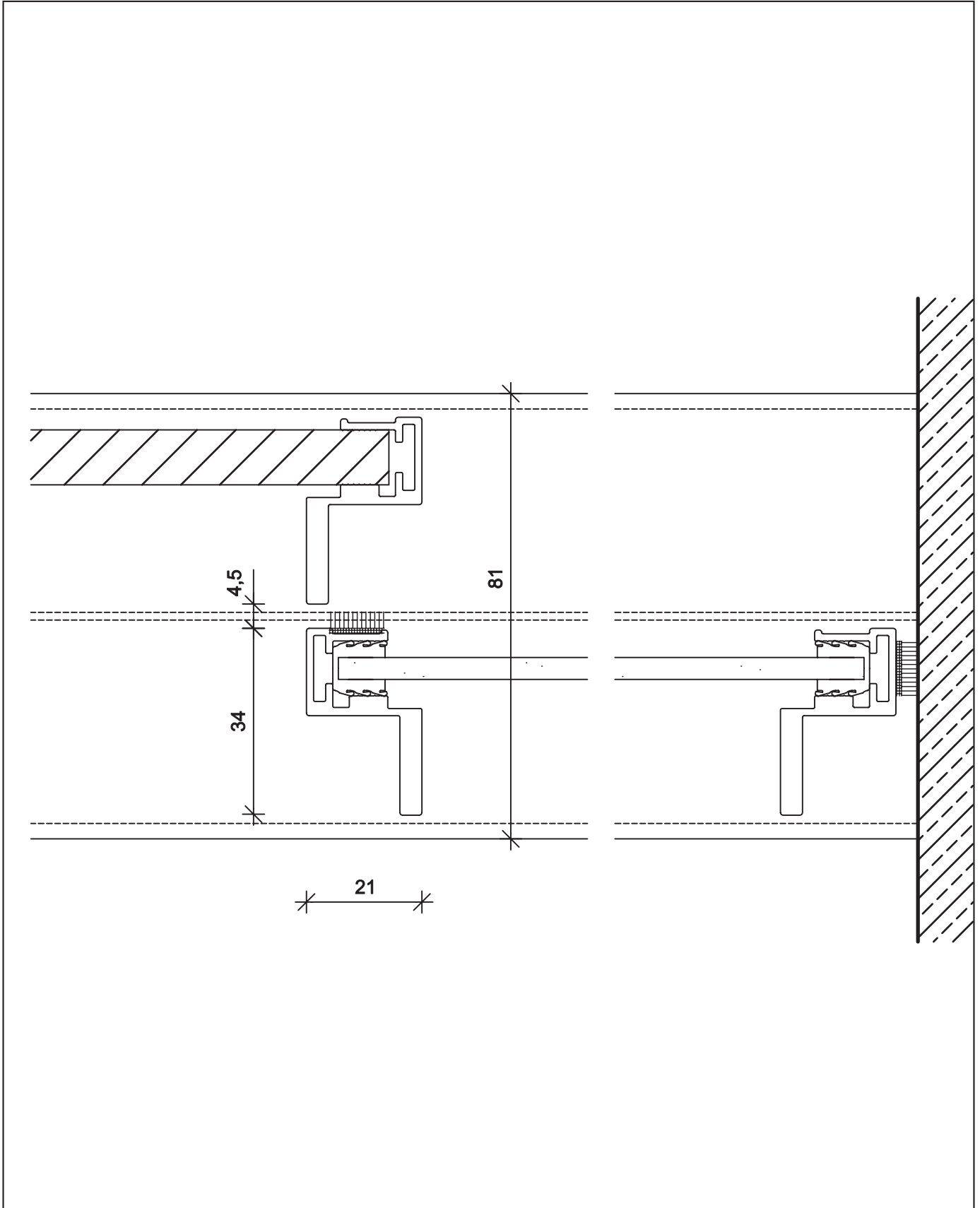
_DETAIL DRAWING

CROSS SECTION HORIZONTAL S410



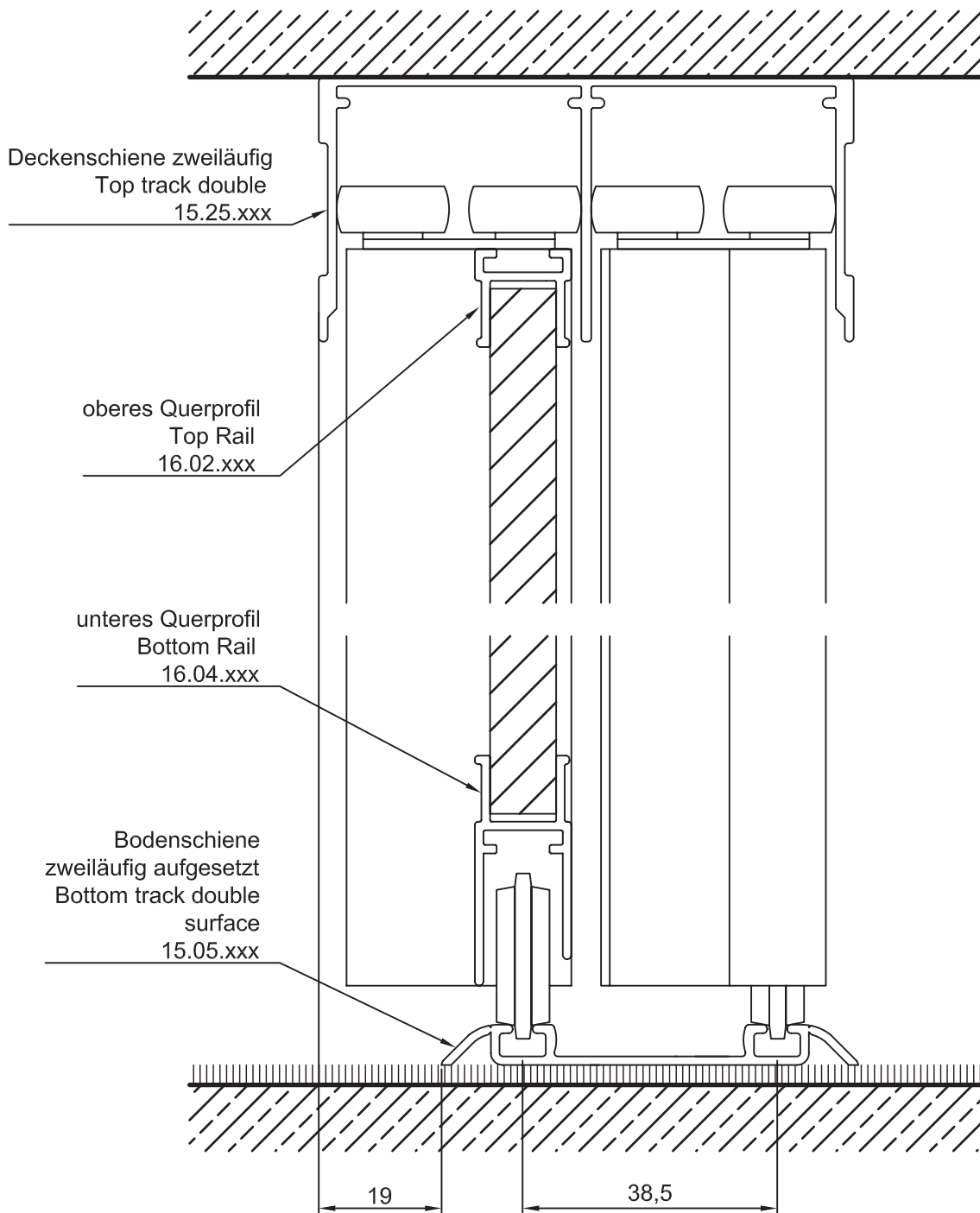
_DETAIL DRAWING

CROSS SECTION HORIZONTAL S420



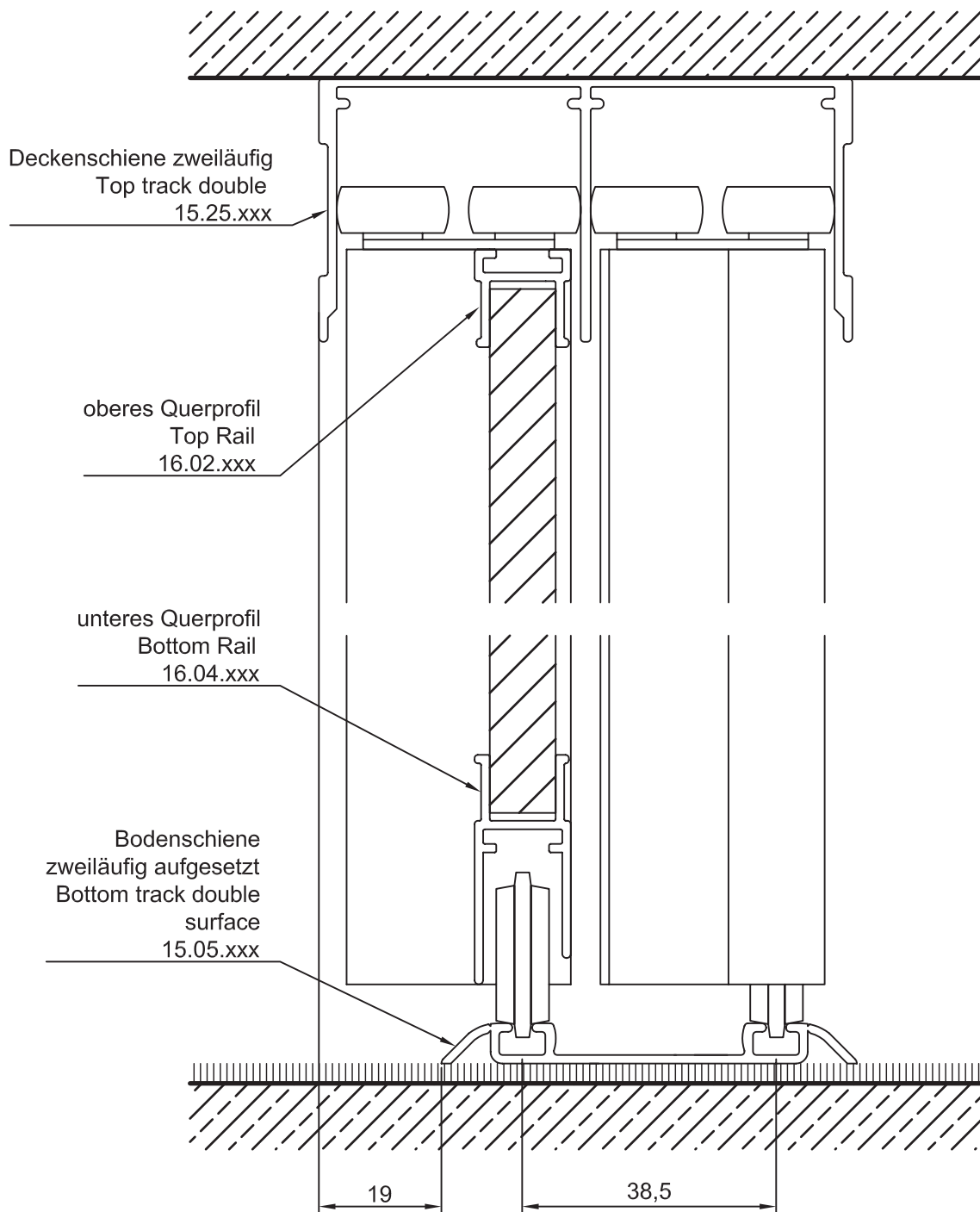
_DETAIL DRAWING

CROSS SECTION VERTICAL S400



_DETAIL DRAWING

CROSS SECTION VERTICAL S410



_DETAIL DRAWING

CROSS SECTION VERTICAL S420

