



# SLIDING DOOR SYSTEMS: ASSEMBLY INSTRUCTIONS

## HOW TO ASSEMBLE A SLIDING DOOR

easy                      medium                      difficult \*

Manufacturing 

Assembly 

\*Base for the degree of difficulty is a standard sliding door without slant.  
This is to be classified as ,easy' in respect of production and installation.

**raumplus**

# INDEX\_

5<sup>th</sup> edition Bremen, January 2006

**General Information / Tools** \_page 3

**Technical Terms**\_page 4

**Preparation/Assembly**\_pages 5-7

A\_Cut frame profiles

B\_Cut panel / mount it

C\_Affix frame around panel / screw it in

D\_Special case - dividing rails

E\_Attach rollers

**Special case - Angled doors**\_pages 8-9

# \_GENERAL INFORMATION / TOOLS

## ASSEMBLY INSTRUCTIONS SLIDING DOOR SYSTEM:

### GENERAL INFORMATION

**raumplus** sliding door systems offer a wide range of variety and versatility. There are systems with and without bottom tracks, a great number of panel variations, doors for sloped ceilings and corner solutions or doors for special application purposes (lockable, application as room divider etc.). In order to install the sliding doors that have been assembled according to these directions, please refer to the installation instructions.

These directions were created by people for people. We have made an effort to develop the instructions and pictures so that they are logical and easy to understand. If you should nevertheless find something to be unclear, please let us know so that we may revise that section.

**Technical details are subject to change.**

First of all, get a general idea about which raumplus series you would like to assemble.

#### **Do you want to install ready-made sliding doors?**

These are the assembly instructions; please see separate installation instructions.

#### **Is your sliding door series called „AIR“?**

In this case you have to follow the separate instructions for series „AIR“.

Please check to see if you received all items by checking the delivery sheet. Please also look out for possible transport damage. In case of any damage please contact your supplier immediately. The single components are numbered on the detail drawing as well as on the delivery sheet – please check.

**REMARKS:** First of all, please read our measurement instructions in order to find the correct measurements.

## TOOLS:

Cross tip screwdriver (Phillips) size 2

Straightedge (optional)

Allen wrench 4 mm (included)

Allen wrench 5 mm

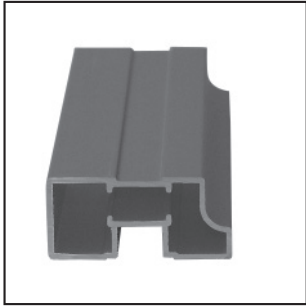
Drill; 2,5 mm, 6,5 mm, 10 mm drill bits

Pencil and / or masking tape

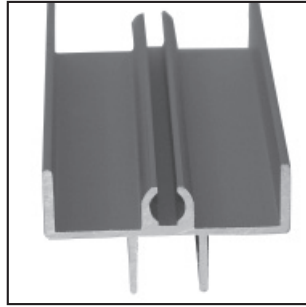
Rubber mallet

Metal cutting saw

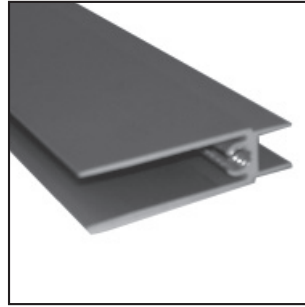
# \_TECHNICAL TERMS



1\_



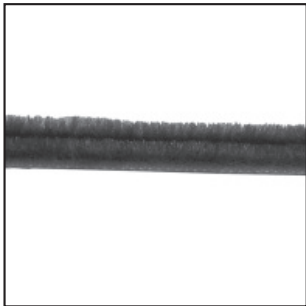
2\_



3\_



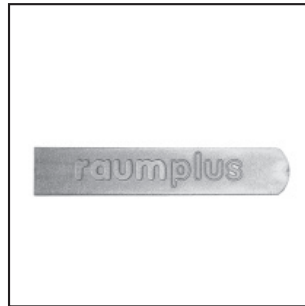
4\_



5\_



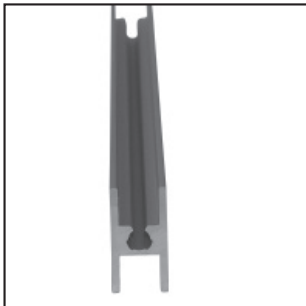
6\_



7\_



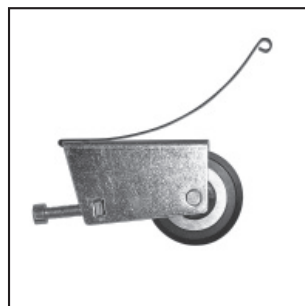
8\_



9\_



10\_



11\_



12\_

**1\_Vertical profile\_**forms the frame of the sliding door together with the top and bottom rails.

**2\_Top horizontal rail\_**forms the frame of the sliding door together with the vertical profiles and bottom rail.

**3\_Bottom horizontal rail\_**forms the frame of the sliding door together with vertical profiles and top rail.

**4\_Hinge connector\_**for angled doors.

**5\_Dust excluding brush\_**available in grey, white, black and brown.

**6\_Bracket for dust excluding brush\_**to keep the ends of the brush in place. Is not included in delivery.

**7\_Plugs (10.07.0xx)\_**

**8\_ and 9\_Dividing rail to divide panels\_**there are rails that are glued on (8\_), that makes a visual division possible, and dividing rails that physically divide panels in a door (9\_), that allows for the application of more than one panel in a door.

**10\_Top roller\_**to be fit into the top part of the frame profile (positionings for top tracks are only necessary when position springs are used).

**11\_ and 12\_Bottom roller\_**rollers embedded in the lower frame profile. Pay attention when using rollers with a locking element that the locking element is not twisted up outside the track when installed. You can only remove doors from the bottom track by carefully leveraging them out with a screwdriver. Furthermore, you cannot insert position springs and stoppers in the bottom track when using rollers with locking elements.

**Panel\_**panels are available in more than 2000 colour and material combinations.

**Important:** For the AIR-door, only series 1500 and 3000 as well as the horizontal profile AIR-door can be used.

The details shown are to be understood as examples; a wide range of variations with similar designs are available.

# \_PREPARATION / ASSEMBLY

## PREPARATION:

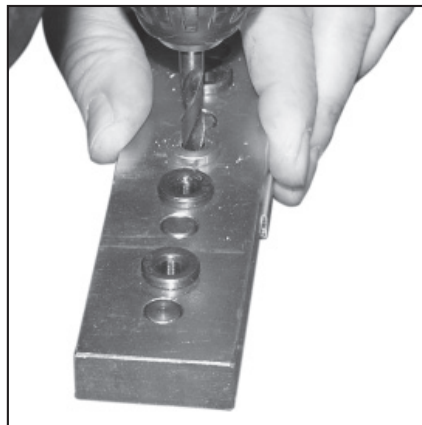
After having unpacked and checked all items you can start your assembly work. We recommend reading these instructions carefully before starting.

When setting the doors temporarily aside, only lean the assembled doors on their lateral frame profiles (leaned on their side)– NEVER stand them straight up on the bottom rails. This may damage the rollers!

## ASSEMBLY:

You will find detailed descriptions of the assembly steps in the following chapters. It is important that you follow these steps in correct order otherwise your sliding door system could get damaged. Work in any case with high accuracy.

### A\_CUT FRAME PROFILES:



1\_Mark your cuts.

2\_Cut the profiles using a mitre saw. In order to properly determine the measurements, keep in mind that the bottom rail fits inside the vertical profile (2 mm longer).

3\_Clean the cut surfaces carefully.

4\_Cut dividing rails to length (same procedure like with bottom rail only with panels of 4-6 mm).

5\_Punch or drill holes for profiles and rollers.

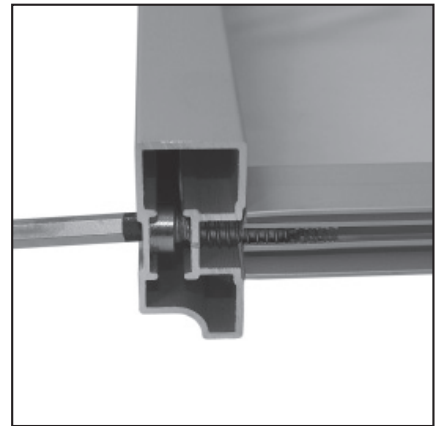
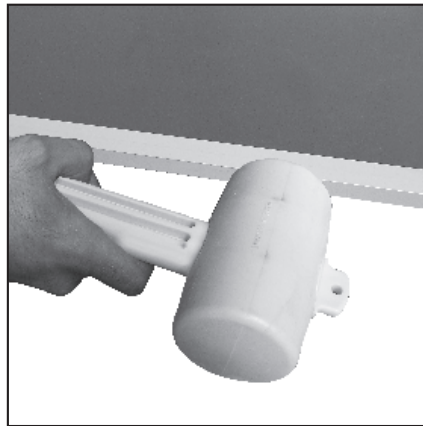
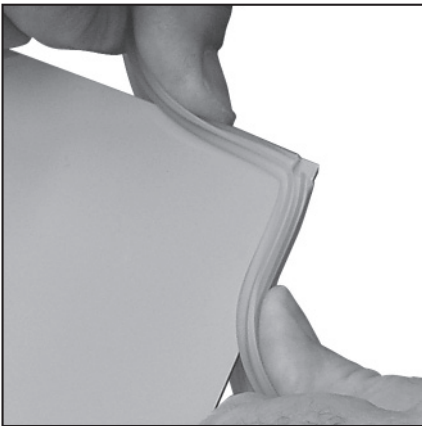
### B\_CUT PANEL / MOUNT IT:

#### **Special Case: dividing rails, which physically divide the panel:**

If you cut the panel yourself, please pay special attention to the measurements of sloped ceilings. We recommend checking the sizes twice. Take the measurements, calculate the angle, and draw up a template – particularly with sloped walls and ceilings.

# \_ASSEMBLY

## C\_AFFIX FRAME AROUND THE PANEL / SCREW IT IN:



1\_Lay the panel on a table.

**Special Case: only for mirror and glass panels:** Stretch the gasket around the glass. Start in the centre of the top edge of the panel. For the corner, cut an approx. 2 mm deep notch into the back of the gasket and stretch the gasket over the corner (picture left).

2\_Put the top rail on the panel and attach it with help of a rubber mallet.

3\_Attach the bottom rail.

4\_Press the stiles onto the panel, screw them together with top / bottom rails.

5\_Put a straightedge striker on the vertical profiles and make corrections, if necessary.

## D\_SPECIAL CASE - DIVIDING RAILS:



1\_As shown in the above example, put profiles, panels and dividing rails together, but do not screw them together yet.

2\_Mark the position for the drill holes with a pencil.

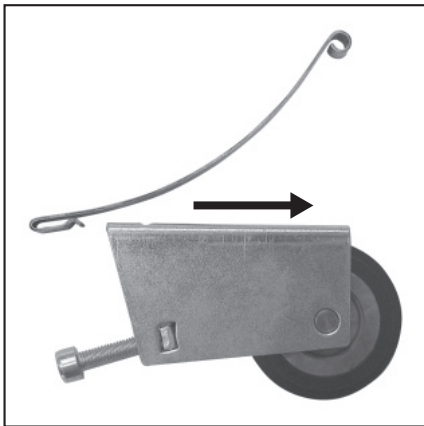
3\_Drill with a 6,5 mm drill and then with a 8,5 mm drill (outside).

4\_Now screw it together.

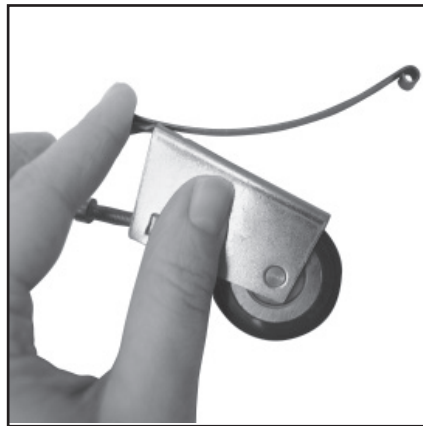
**NEW: Plugs for dividing rail (10.07.35x) and screw (10.07.008).**

# \_ASSEMBLY

## E\_ATTACH ROLLERS:



1\_



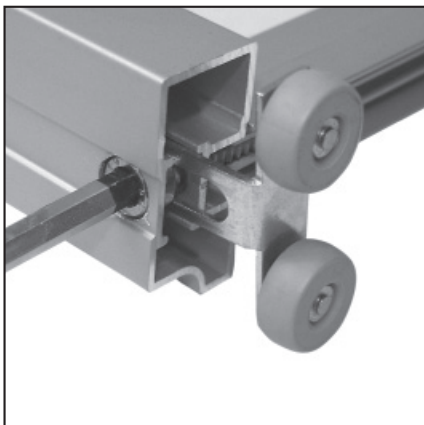
2\_



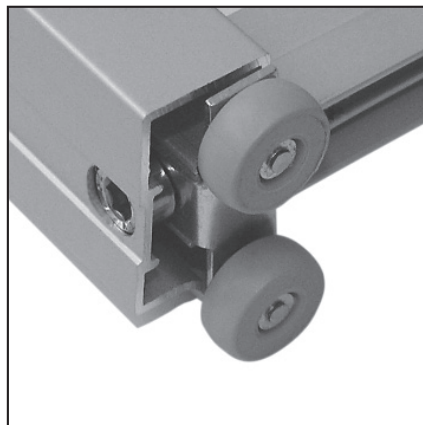
3\_

## Bottom rollers:

**NOTICE:** Before you install the bottom roller, you have to attach the anti-jump spring to the roller (pictures 1\_ and 2\_). Push the bottom roller into the bottom rail and screw it in through the vertical profile (picture 3\_).



4\_



5\_

## Top rollers:

Top rollers are screwed together with the vertical profiles. For the top horizontal profile you screw the screws in completely in order to cut the screw thread, and then unscrew a bit so that the top rollers can be inserted. Push the top roller into the top of the vertical profile and tighten the screw (pictures 4\_ and 5\_).

**Important:** Please tighten the screw for the top roller carefully. By applying too much power you could damage the top roller.

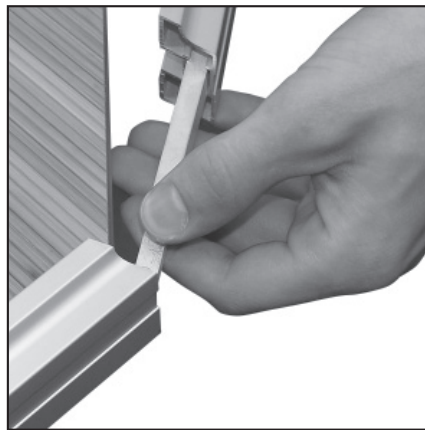
# \_ASSEMBLY

## SPECIAL CASE ANGLED DOOR (OBTUSE ANGLE)

### SPECIAL CASE ANGLED DOOR:



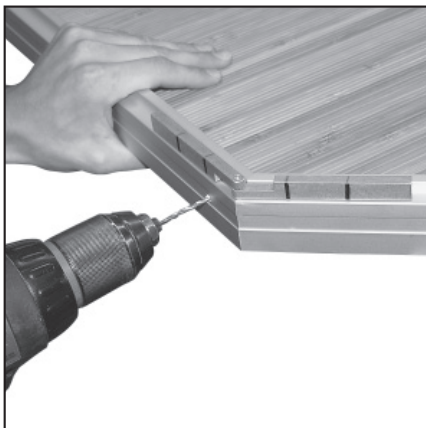
1\_



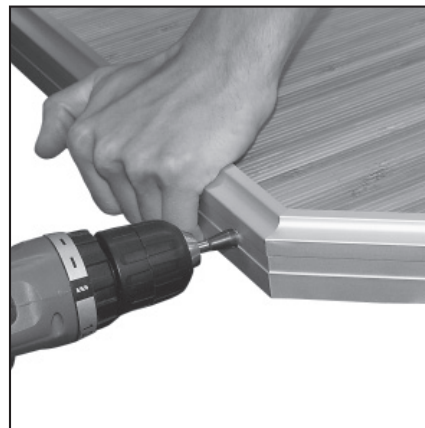
2\_



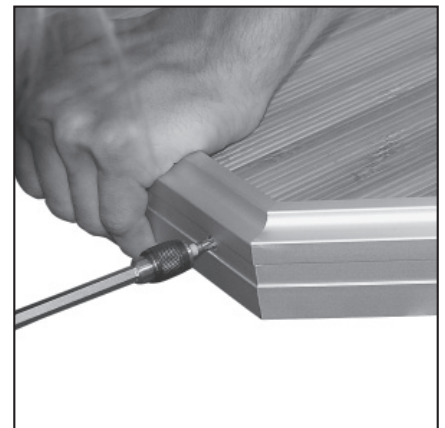
3\_



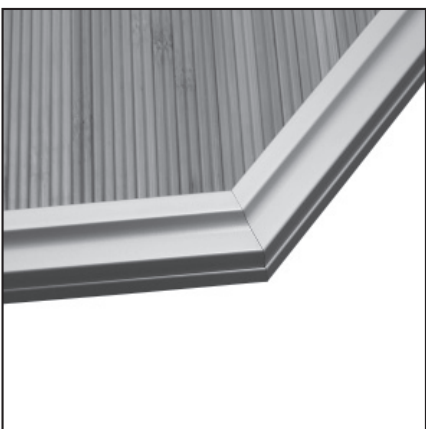
4\_



5\_



6\_



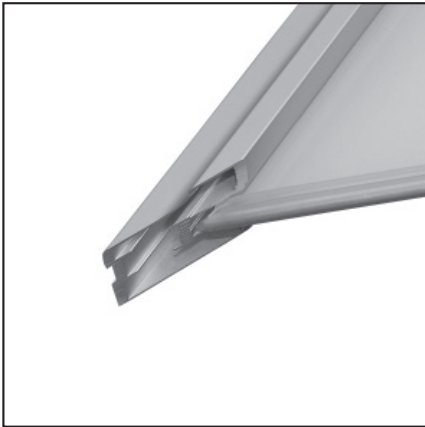
7\_

Profiles for angled doors are additionally stabilized by a hinge connector. It is simply pushed into the profiles. With angled doors the corners must be angled so that it fits together perfectly.

Attach the profile to the panel so that the mitre cuts close without a gap. Drill two holes per corner in the flat parts of the hinge (see picture 4\_) and drill a notch for the screw head using a countersinker. Screw it all together with a 2,9 x 6,5 mm screw.

# \_ASSEMBLY

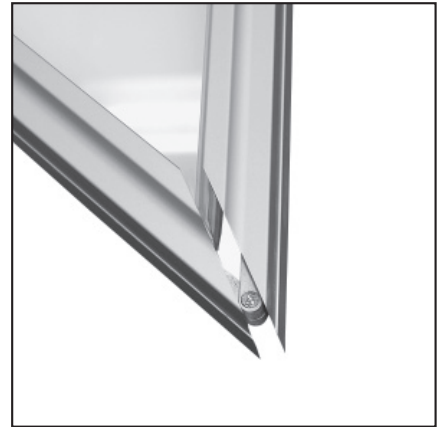
## SPECIAL CASE ANGLED DOOR (ACUTE ANGLE)



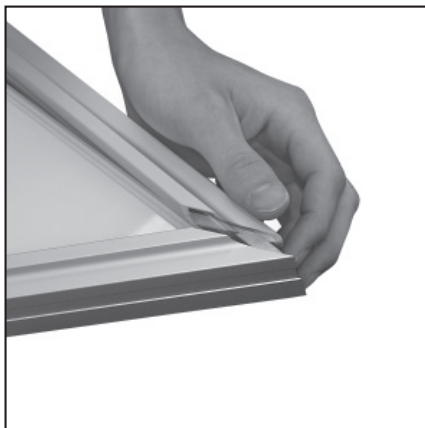
1\_



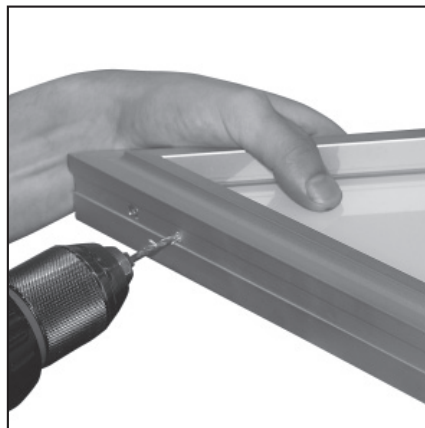
2\_



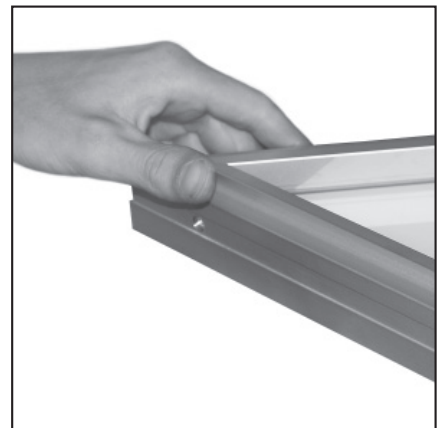
3\_



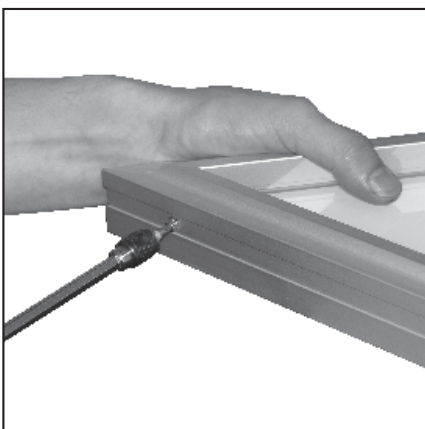
4\_



5\_



6\_



7\_

For these angles the same applies as for the previous page.

**Important:** You must measure everything with precision beforehand. The bottom rollers are attached normally as in **E\_** and depending on the angle either one or no top roller is used. Since there must be at least two movement points on top, a glider is inserted instead of a top roller (read the Installation instructions, How to install a sliding door). For this, instead of a top roller a glider is inserted and if both top rollers are missing two gliders are inserted.