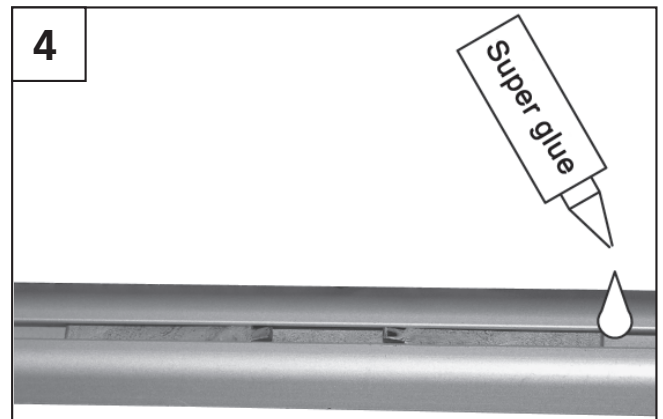
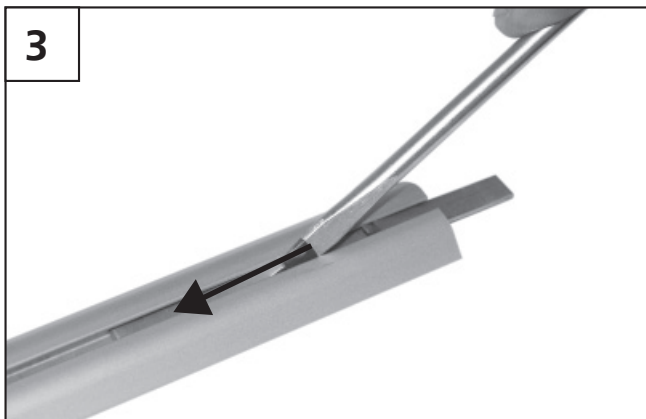
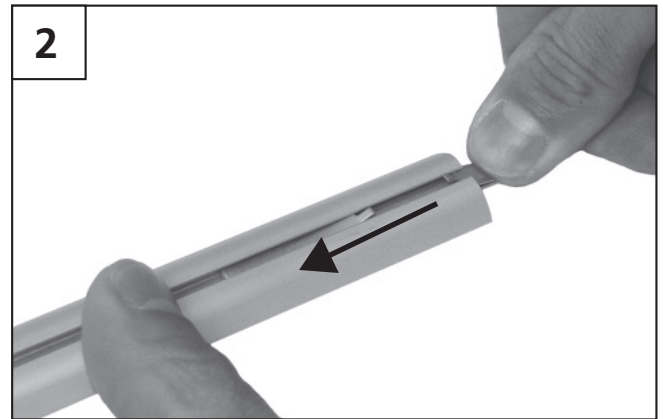
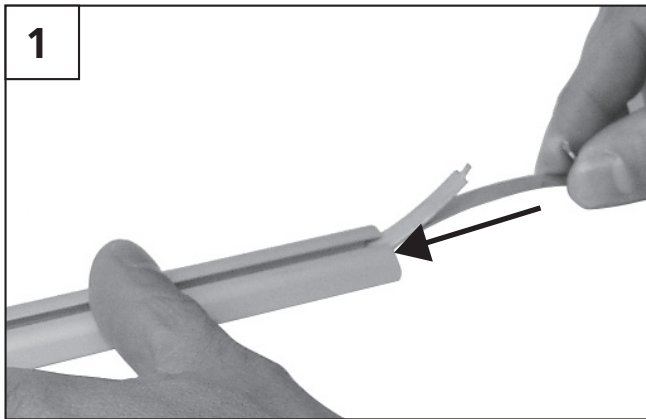


SLIDING DOOR SYSTEMS: ASSEMBLY INSTRUCTIONS

POSITION SPRING

5th edition Bremen, January 2006



_Before installing the bottom track, the position springs (min. 2) are to be pushed in the bottom track and situated in the approximate position. To make that easier, use a screwdriver, for example.

_After the doors are installed, the springs are pushed into their final positions.


_Mark the centre of the bottom roller wheel on the bottom track in the desired door position.

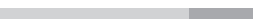
_Position the position springs so that they are centered on the marking.

_Using super glue or cyanoacrylate adhesive (**not included in delivery**), fix the ends of the position springs.

PLEASE NOTE: Please keep in mind that position springs cannot be inserted in the area near the bottom door stopper. If you would like to install security bottom rollers, do not use position springs.

easy medium difficult *

Manufacturing 

Assembly 

*Base for the degree of difficulty is a standard sliding door without slant.
This is to be classified as ,easy' in respect of production and installation.

raumplus