

SLIDING DOOR SYSTEMS: INSTALLATION INSTRUCTIONS

AIR-SYSTEM WITH COVER FOR FRAMELESS DOORS

	easy	medium	difficult *
Manufacturing	=====		
Assembly	=====		

*Base for the degree of difficulty is a standard sliding door without slant.
This is to be classified as 'easy' in respect of production and installation.

raumplus

INDEX_

5th edition Bremen, January 2006

General information / Tools_page 3

Technical terms_page 4-5

Preparation_page 5

Assembly / Installation_pages 5-9

A_Insert top roller into insert profile

B_Installation of the top track / insert profile

C_Insert stopper and brake for top roller

D_frameless all-wood door

E_frameless all-glass door

F_Install cover

Detail drawings_pages 10-14

_GENERAL INFORMATION / TOOLS

ASSEMBLY INSTRUCTIONS AIR-SYSTEM:

GENERAL INFORMATION

The **raumplus** AIR-system offers a wide range of variety and versatility. It does not need a bottom track and can directly be installed to the ceiling or to the wall. Especially the AIR-system with cover can easily be installed and is even adjustable. Furthermore the AIR-system with cover offers the ability to use a synchron drive mechanism with or without motor drive.

These directions were created by people for people. We have made an effort to develop the instructions and pictures so that they are logical and easy to understand. If you should nevertheless find something to be unclear, please let us know so that we may revise that section.

Technical details are subject to change.

Please check to see if you received all items by checking the delivery sheet. Please also look out for possible transport damages. In case of any damage please contact your supplier immediately.

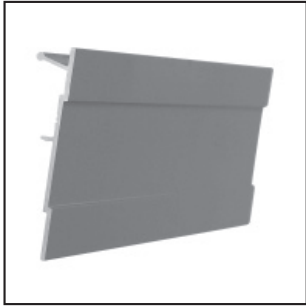
REMARKS: Read the measurement instructions.

The maximum door weight of the frameless AIR doors is 60 kg.

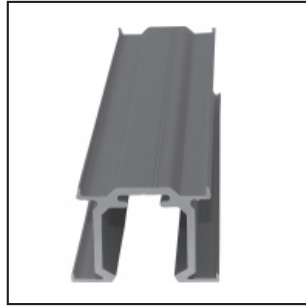
TOOLS:

Cross tip screwdriver (Phillips)
Allen wrench 2 mm and 4 mm
Drill 6 mm, 3,5 mm, 2,5 mm drill bits
Rubber mallet
2 open-ended spanners (13 mm)
Hack saw / carbide tip blade

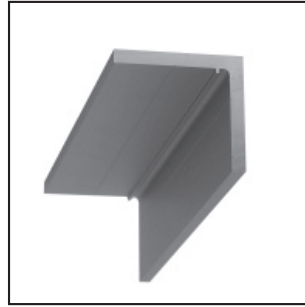
_TECHNICAL TERMS



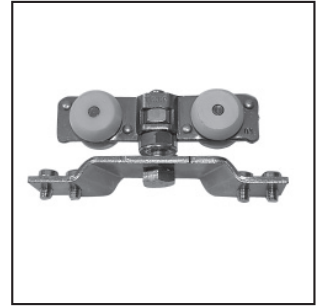
1_



2_



3_



4_



5_



6_



7_



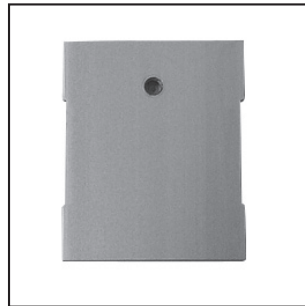
8_



9_



10_



11_



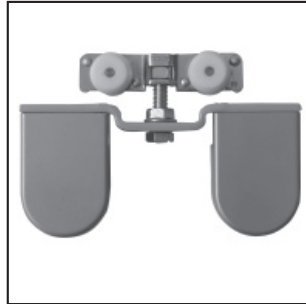
12_

- 1_ Cover for insert profile (14.50.0xx)** is to be fixed (clasped) onto the insert profile / slide rail and covers the top roller.
- 2_ Top track insert system AIR (14.55.020)** is either to be mounted in the top track or to the wall connection profile or directly to the ceiling.
- 3_ Wall connection profile (14.54.020)** is to be affixed to the wall and holds the AIR track.
- 4_ Top roller (10.06.010)** is pushed into the AIR track.
- 5_ Brake for top roller (10.05.030)** is to be put between the rollers of one door.
- 6_ Stopper for top roller without brake (10.05.060)** is to be placed at the end of the insert profile.
- 7_ Stopper for top roller with brake (10.05.015)** is to be placed at the end of the insert profile.
- 8_ Screw for wall connection profile (10.07.081)** to affix the insert profile AIR to the wall connection profile.
- 9_ Nut for wall connection profile (10.07.082)** to affix the insert profile AIR at the wall connection profile.
- 10_ Connector for end cap (10.05.290)** to fasten the end cap to the insert profile.
- 11_ End cap for insert profile (10.05.xxx)** when using 2 cover profiles, the end cap is to be placed on the open end of the insert profile.
- 12_ End cap for wall connection profile (10.05.296 left / 10.05.297 right)** see above.

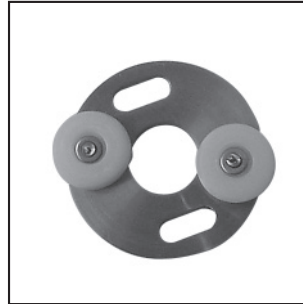
_TECHNICAL TERMS / PREPARATION



13_



14_



15_



16_



17_

13_ Bottom guiding plastic version for wood door (10.05.023)_serves as a safe floor guide for the door and is installed on the floor.

14_ Top roller with suspension all-glass door (10.05.110)_is inserted into the insert profile and mounted to the all-glass door. **Please observe the maximum load capacity!!!**

15_ Bottom guiding with rollers all-glass door (10.05.120)_is installed on the floor and serves to guide on the floor.

16_ Bottom guiding plastic version all-glass door (10.05.125)_is installed on the floor and serves for safe guiding for all-glass door on the floor.

17_ Square handle 80 x 80 mm (12.02.091)_is to be glued to the door. The coloured inserted plate is not included in delivery; however, the double-sided adhesive film used to glue on the handle is included.

PREPARATION:

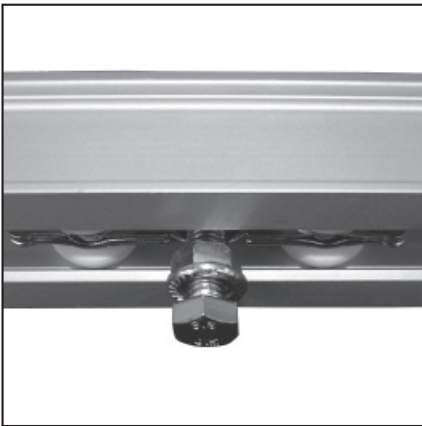
After having unpacked and checked all items you can start your assembly / installation work. Particularly if you are assembling the sliding door alone, we recommend reading these instructions carefully before starting.

ASSEMBLY / INSTALLATION:

You will find detailed descriptions of the assembly steps in the following chapters. It is important that you follow these steps in correct order otherwise your sliding door system could get damaged.

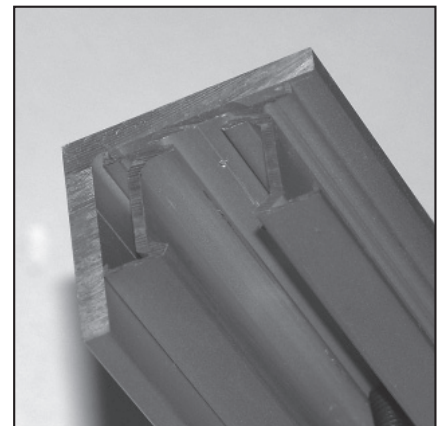
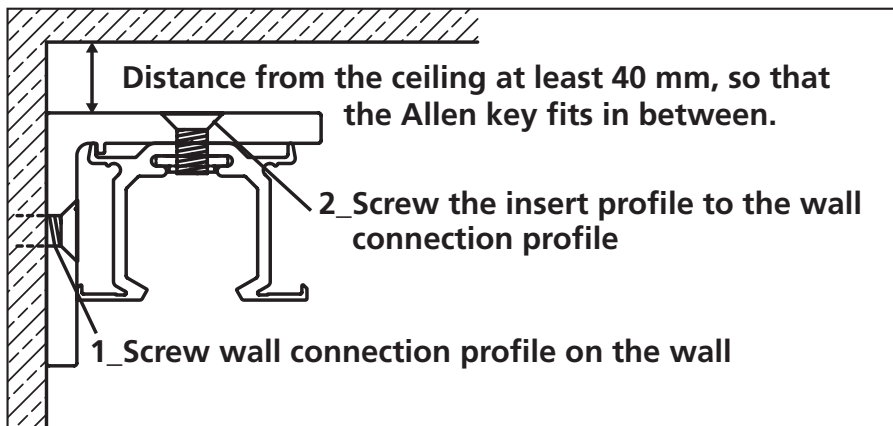
_ASSEMBLY / INSTALLATION

A_INSERT TOP ROLLER INTO INSERT PROFILE:



Push the upper parts of the top rollers, which you have previously disassembled into the insert profile. In case the insert profile is to be installed from wall to wall, please make sure that you push in both top rollers, the brake between the rollers as well as the stoppers before installation into the insert profile.

B_INSTALLATION OF TOP TRACK / INSERT PROFILE:

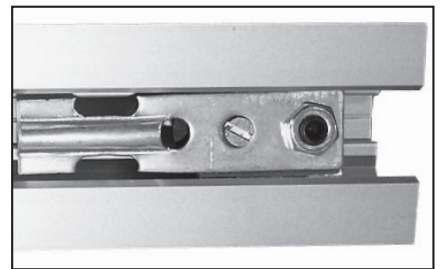
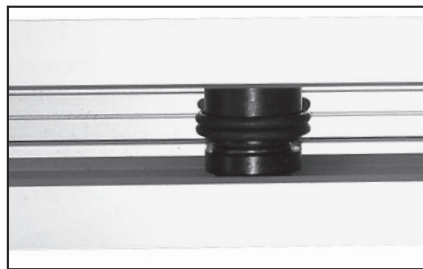
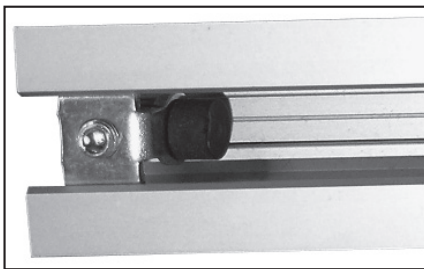
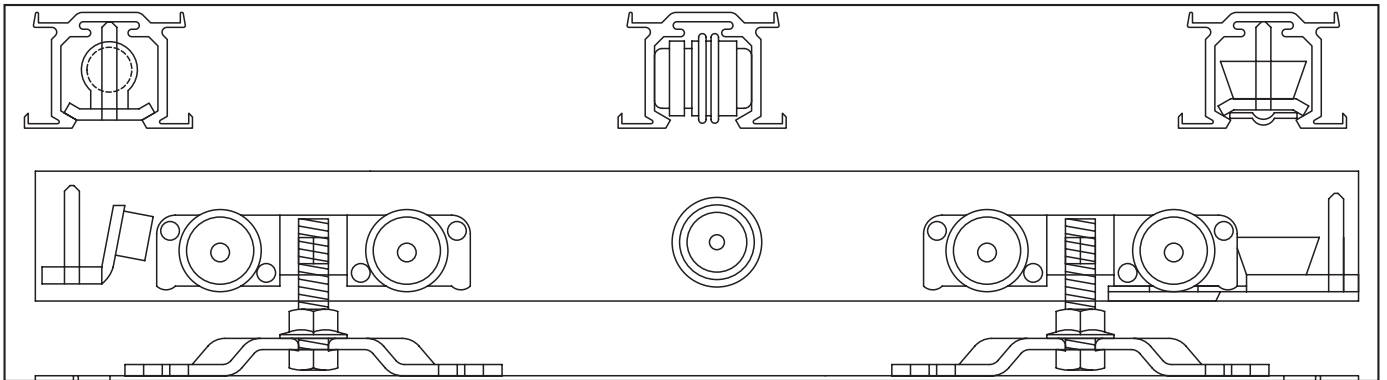


Before fastening the insert profile to the wall connection profile, you have to prepare the drill holes. It is important to fasten the wall connection profile professionally at the wall with a sufficient distance from the ceiling (at least 40 mm). Drill holes in regular distances (minimum distance of 40 to 50 cm between borings) into the wall connection profile and countersink the outside of the top borings. Now drill holes into the insert profile with the same distances. First, mount the wall connection profile to the wall and then the insert profile to the wall connection profile or mount the insert profile directly to the ceiling. When you install the wall connection profile have the screw heads in top and the nut.

Please note: The stability is dependent upon the quantity and quality of the drilling. There may be problems with the attachment to a suspended ceiling.

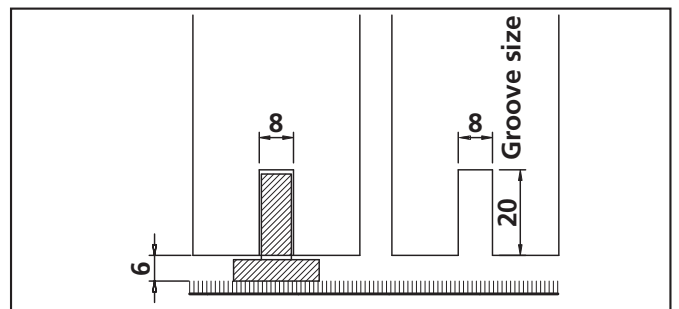
_ASSEMBLY / INSTALLATION

C_INSERT STOPPER AND BRAKE FOR TOP ROLLER:



Install stopper and the brake for top roller in the insert profile as indicated above (it is to be put into correct position after having installing the doors). **Note:** The brake for top roller has to be positioned between both top roller of one door element.

D_FRAMELESS WOOD DOOR:



1_

2_



1_The top roller has to be screwed directly onto the wood door. Minimum distance of door-edge to center of top roller 150 mm.

2_A groove has to be milled into the bottom of the door in order to guide the door through the bottom guiding which is mounted on the floor (see above drawing). Please take the correct measurements from the detail drawing.

Lastly, you have to adjust the door.

_ASSEMBLY / INSTALLATION

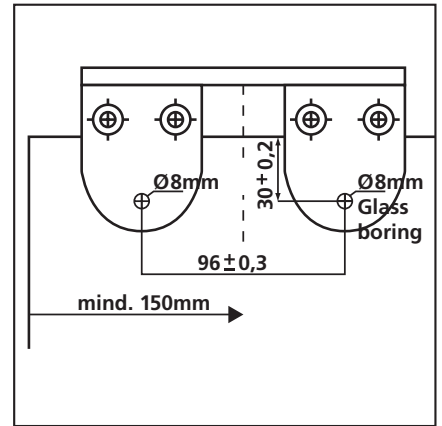
E_FRAMELESS ALL-GLASS DOOR:



1_



2_



3_

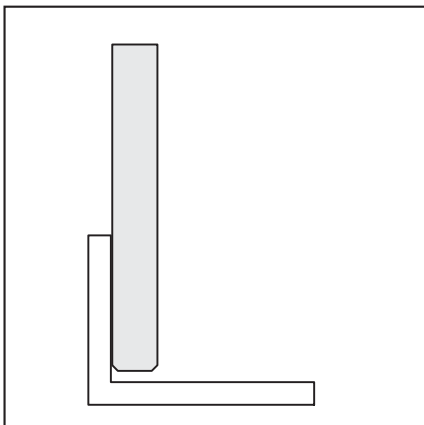
Note: When placing the order, you should make sure that the 8 mm borings are prefabricated so that you can attach the clamps to the glass door.

_Fasten the clamps for the all-glass door:

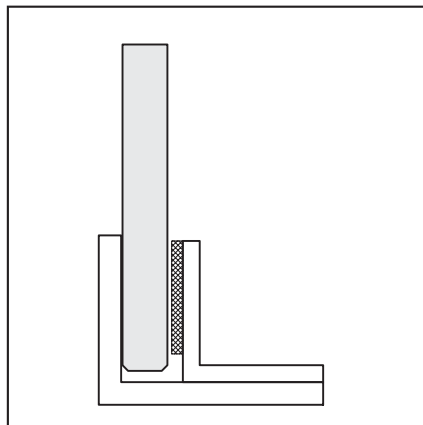
Loosen the screws on the glass clamps and put the clamps on the door. The centre of the cross-brace of the clamps should be placed approx. 150 mm from the door edge (picture 3_). Then tighten the screws. The safest method is to put a bolt between the clamping jaws in order to hold the glass panel in place. For this you have to cut an 8 mm-hole into the glass and put the bolt in the provided positions on the inner sides of the clamps.

_Install glass doors:

Hang the glass doors in the roller carriages and screw them in. Adjust / align them in an opened position.



4_



5_



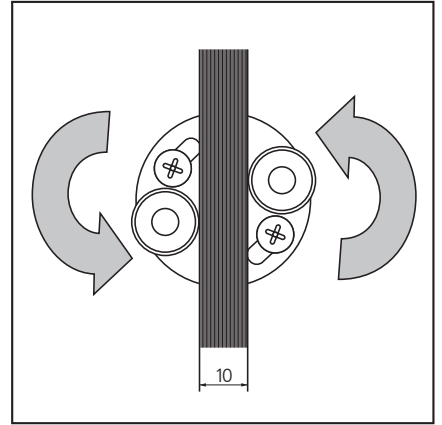
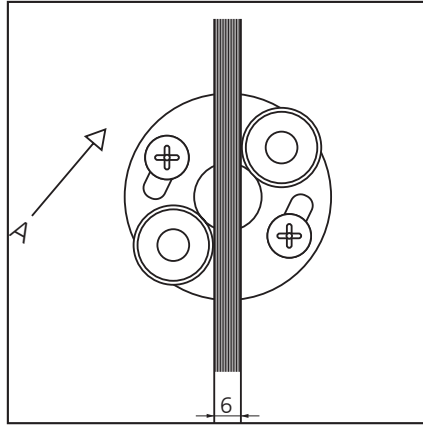
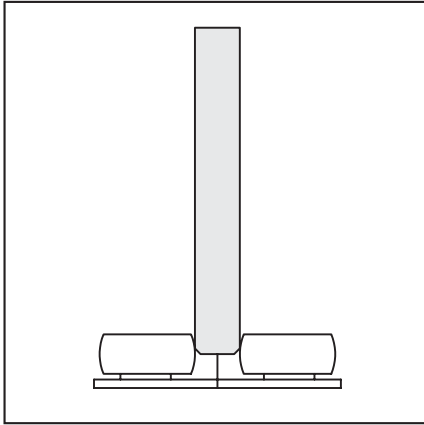
6_

Mount bottom guiding plastic version all-glass door:

Align the doors in a vertical position and affix the bottom guiding angle (in closed position at the outer glass door edge). Put the opposite angle onto the already fixed part of the angle and fasten it as well (picture 4_ to 6_).

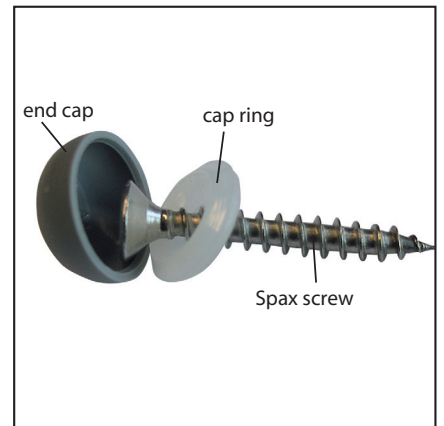
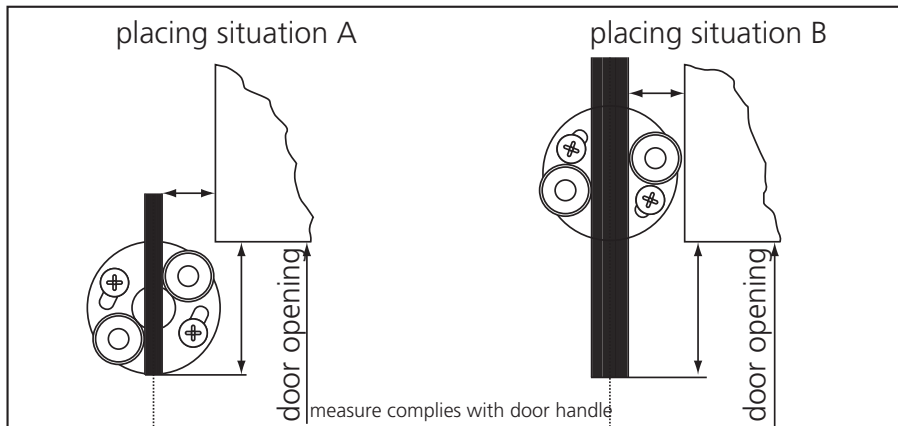
Attachment screws are not included.

_ASSEMBLY / INSTALLATION

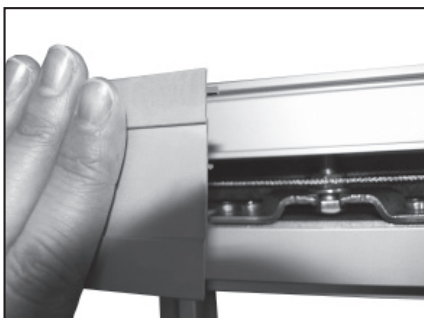


Mount bottom guiding with rollers all-glass door:

Fasten the ground plate with the included "spax" screws (do not forget the washers) on the floor but do not screw them in completely just yet. Push the door wing between the two rollers and twist the ground plate, so that the rollers are pressed slightly against the glass panel. Tighten the screws completely and press the cover plug over the "spax" screw / washer. Please make sure the cover plugs do not grind on the glass panel.

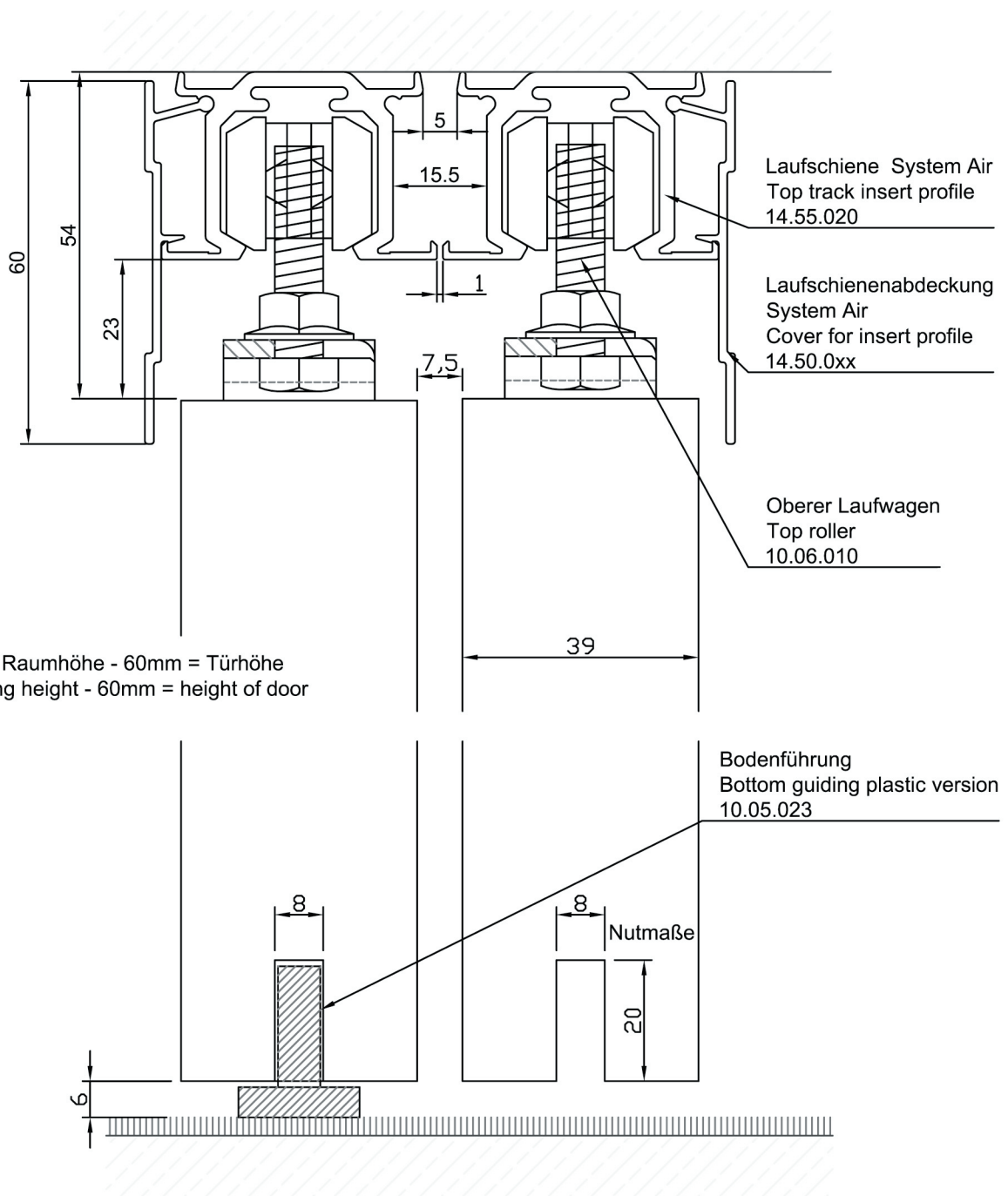


F_INSTALL COVER PROFILE:

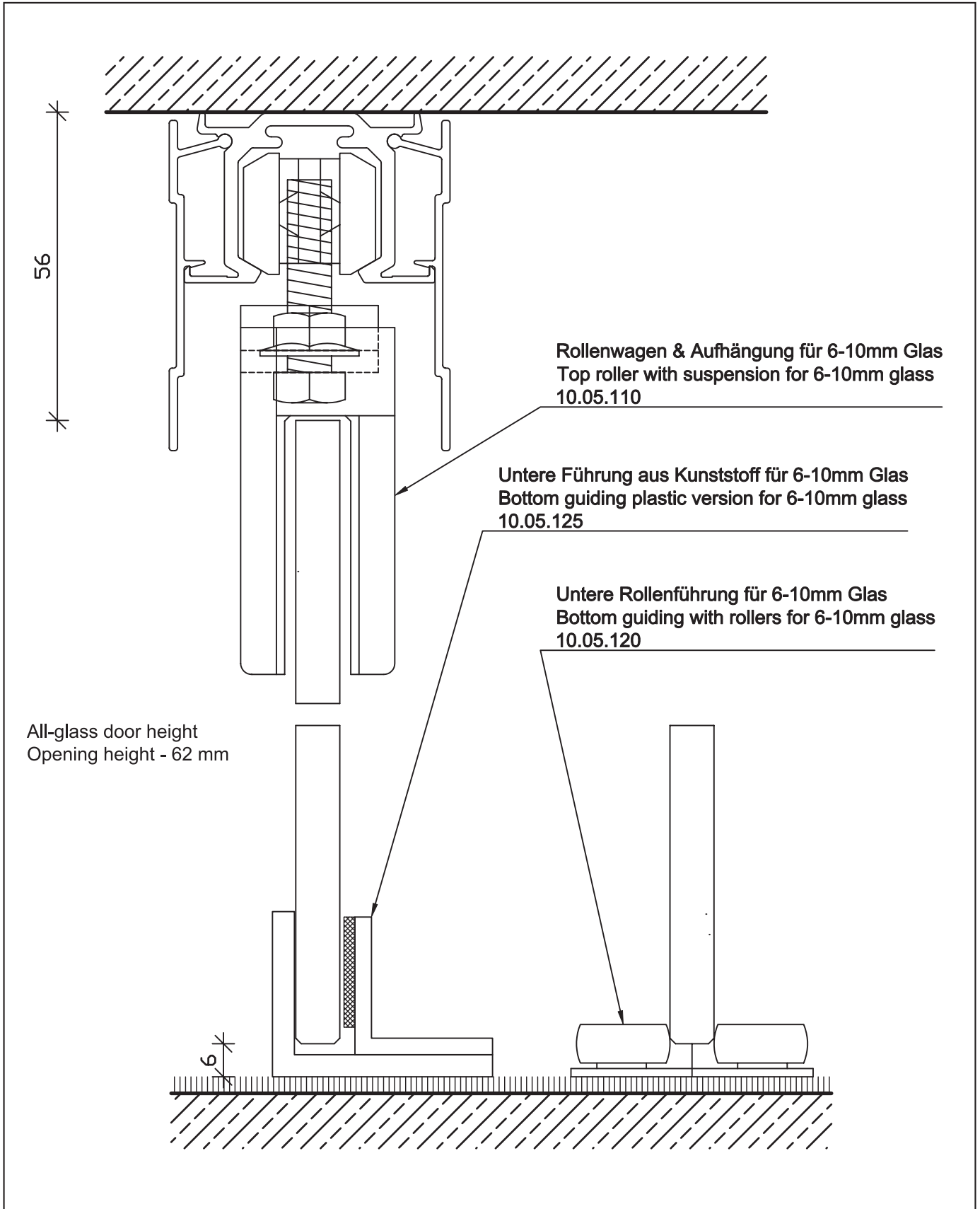


Finally clip the cover in front of the AIR track in order to cover the top roller.

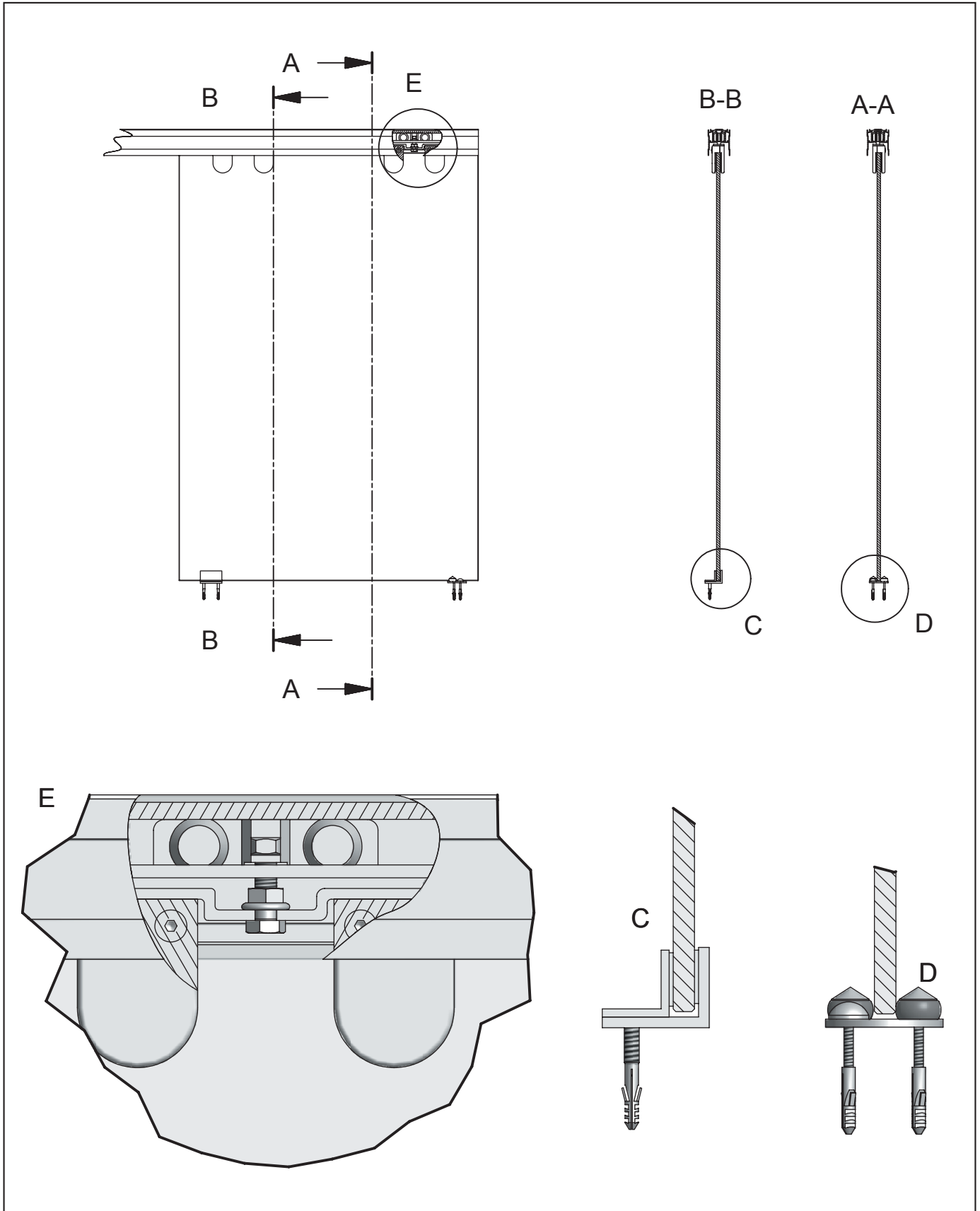
_DETAIL DRAWING



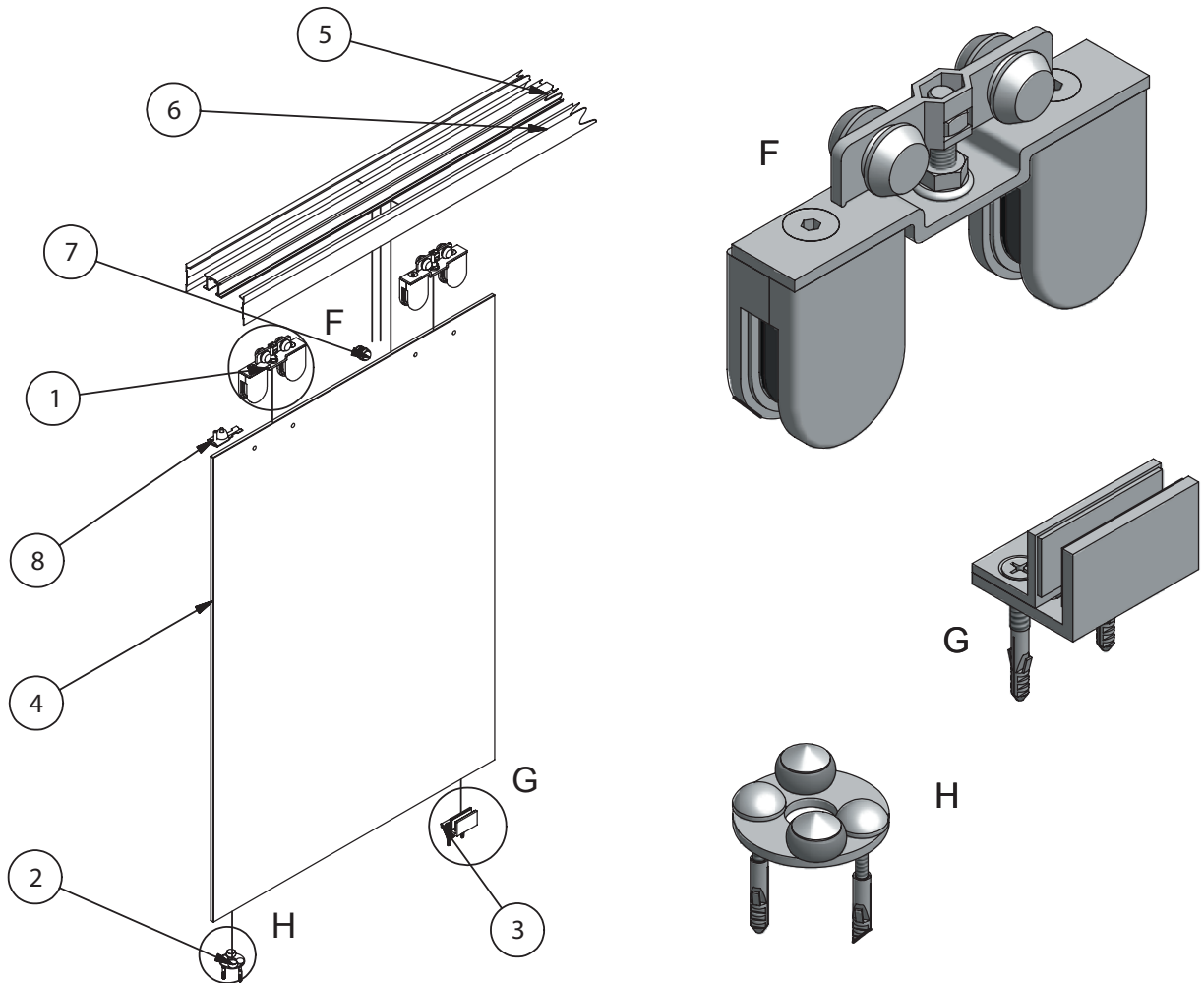
_DETAIL DRAWING



_DETAILZEICHNUNG



_DETAILZEICHNUNG

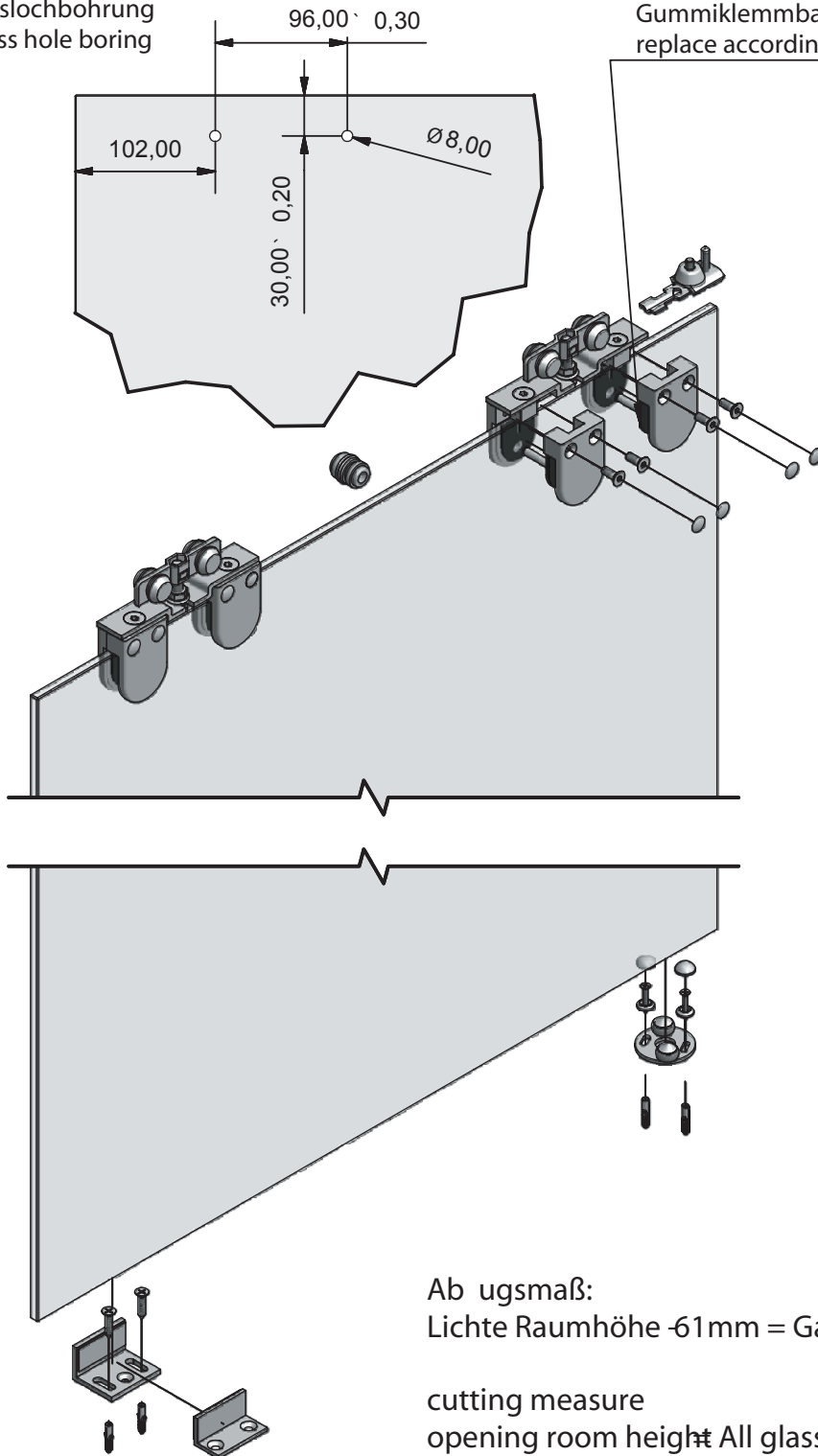


Item list

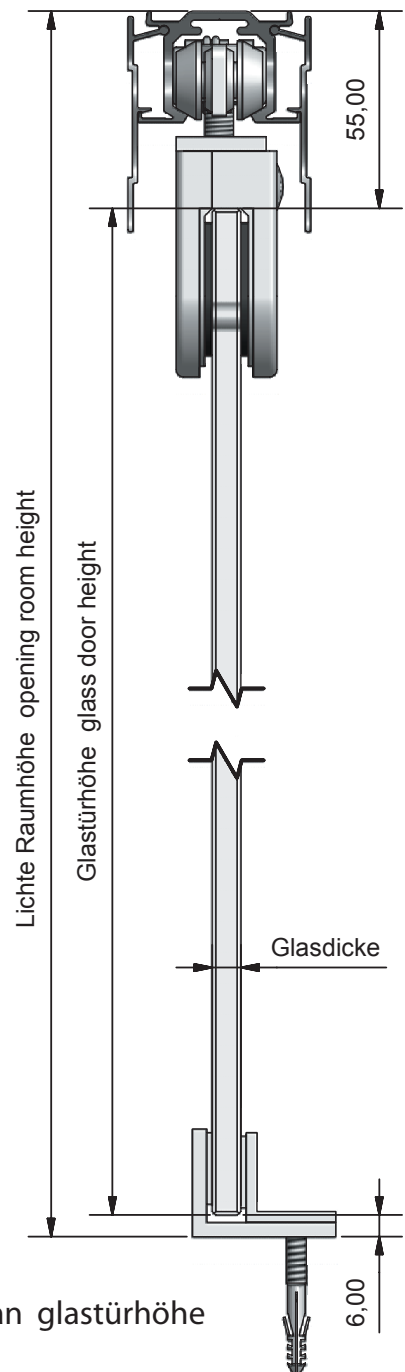
OBJECT	QUANTITY	UNIT NUMBER	DESCRIPTION
1	2	10.05.110	Top roller with suspension, all-glass door
2	1	10.05.120	Bottom guiding with rollers, all-glass door
3	1	10.05.125	Bottom guiding plastic version, all-glass door
4	1	Glass-8mm oder 10mm	Safety glass plate
5	1	14.55.0xx	Top track insert system AIR
6	2	14.50.0xx	Cover for insert profile system AIR
8	1	10.05.015	Stopper for top roller with brake
7	1	10.05.030	Brake for top roller

_DETAILZEICHNUNG

Glaslochbohrung
glass hole boring



Gummiklemmbacken \pm nach Glasdicke austauschen
replace according to glass thickness



Ab ugsmaß:
Lichte Raumhöhe - 61 mm = Gan glastürhöhe

cutting measure
opening room height - 61 mm = All glass door height