

INTERIOR SYSTEMS: ASSEMBLY INSTRUCTIONS

INTERIOR SYSTEM UNO

INDEX

5th edition Bremen, January 2006

General Information / Tools_page 3

Technical Terms_page 4-5

Preparation_page 4

Assembly_page 6

A_Build-up

B_Corners

Measurements_pages 7-9

Assembly in detail_pages 10-14

A_Profile connections

B_Ceiling- and wall connection

C_Adjustment foot

D_L-carrier

E_Carrier for glass shelf

F_Drawer corpus without rollers

G_Drawer corpus with rollers

H_Accessories

Detail drawings_pages 15-17

_GENERAL INFORMATION / TOOLS

ASSEMBLY INSTRUCTIONS: INTERIOR SYSTEM UNO: GENERAL INFORMATION

The interior systems from **raumplus** offer a wide range of variation possibilities. Because of this their assembly is a bit more complex than for other more simple systems. A very big advantage of the interior system UNO is, that you can easily move all vertical elements and accessories to other places after having assembled them, that means it can be adapted to changing requirements at any time.

These directions were created by people for people. We have made an effort to develop the instructions and pictures so that they are logical and easy to understand. If you should nevertheless find something to be unclear, please let us know so that we may revise that section. **Technical details are subject to change.**

In order to simplify these assembly instructions, it is only summarised here the assembly work itself. The details are treated in own chapters.

Approach: Preparation – Corner system – Base construction from left hand side, etc.

Are you installing drawer unit?

Make sure to install the drawer unit temporarily before the final adjustments in order to achieve exact results.

Place the shelves for the corners?

Please read the chapter 'installation of corners' and take exact measures, where these corners shall be placed.

Check the delivery of the single items with help of the delivery sheet. In case of any claims or transport damages please contact Raumplus immediately.

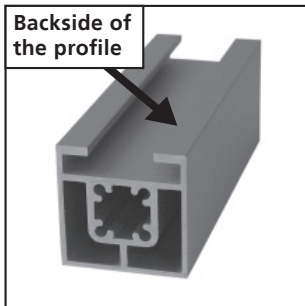
TOOLS:

Crosstip screwdriver (Phillips)
Level, tape measure, maybe - rubber mallet (optional),
Allen wrench

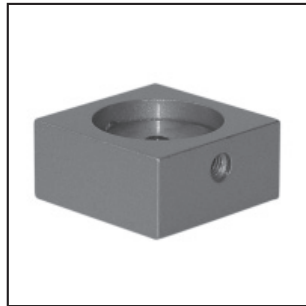
For drawer with rollers:

Drill, metal drill 8,5 mm, metal drill 5 mm
threading tool 10 mm
open ended wrenches

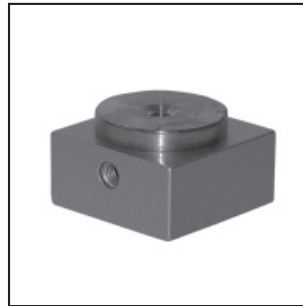
_TECHNICAL TERMS



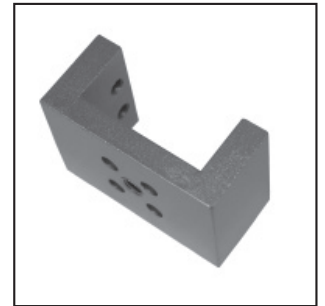
1_



2_



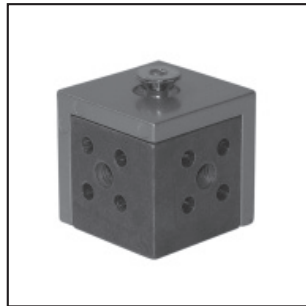
3_



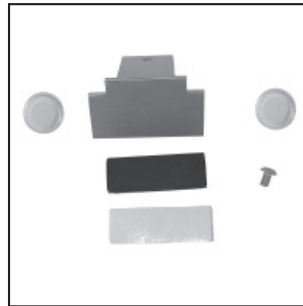
4_



5_



6_



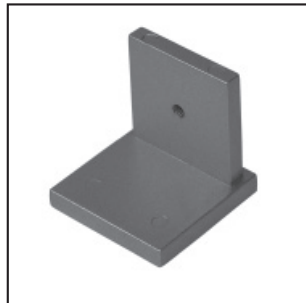
7_



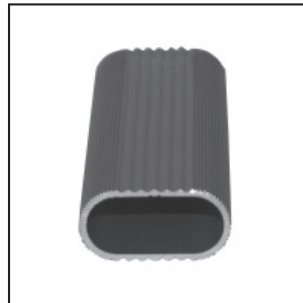
8_



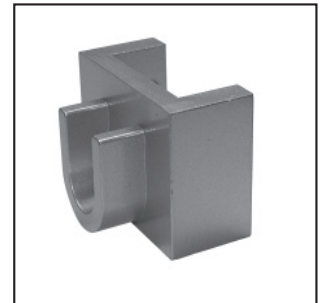
9_



10_



11_



12_

1_Carrier profile (80.01.020)_on this profile the entire carrier and profile connections are to be fixed. It also sections off the wardrobe space. It is also positioned horizontally, e.g. for wall connections.

2_Wall- and ceiling connection with bushing (80.20.040)_is connected with the carrier profile and serves either as the lateral support or as a ceiling connection.

3_Profile connection with bushing (80.20.060)_serves as connection of a carrier profile to the back.

4_Universal carrier (80.40.050)_is available for profile connections or for L-carrier and carrier profile.

5_L-carrier (80.40.020)_for shelves and drawers.

6_Corner connection (80.20.090)_for drawer corpus unit with rollers.

7_Attachment for glass shelf carrier (80.40.025)_

8_Adjustment foot (80.20.015)_serves for height adjustment of the carrier profiles. Minimum height 32 mm, maximum height 80 mm.

9_Transition piece (80.20.010)_fastening for the adjustment foot.

10_End cap (80.20.090)_

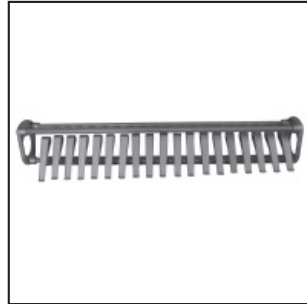
11_Hanging rod (80.22.050)_

12_Rod carrier (80.40.030)_

TECHNICAL TERMS / PREPARATION



13_



14_



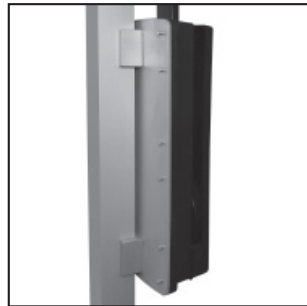
15_



16_



17_



18_

13_ **Belt keeper (80.22.060)**_

14_ **Tie keeper (80.22.070)**_

15_ **Universal keeper (80.22.080)**_

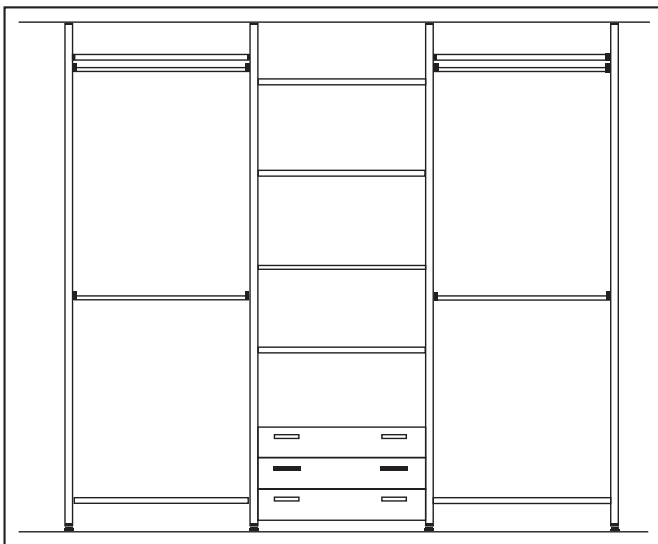
16_ **Clothes lift (80.22.090 upto 830 mm width / 80.22.095 upto 1150 mm width)**_

17_ **Adapter for belt-, tie- and universal keeper (80.22.065)**_to fasten the the keeper at the carrier profile.

18_ **Adapter for clothes lift (80.22.098)**_to fasten the clothes lift at the carrier profile.

The shown details are to be understood as examples, a wide range of variations with similar design is available.

PREPARATION:



This drawing shows an example.

Unpack and check the number of the single items also for possible damages.

We recommend to read these instructions carefully before starting to assemble.

_ASSEMBLY

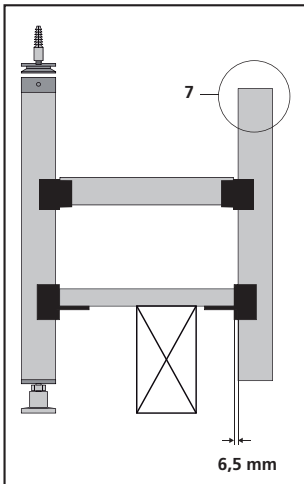
ASSEMBLY:



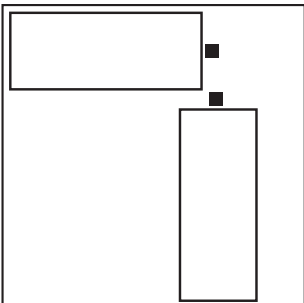
Please find the detailed descriptions of the single assembly steps in the following chapters. You have to assemble from right hand side to left hand side.

Before starting to set up, you have to affix all wall and ceiling connections. In any case please work exactly!

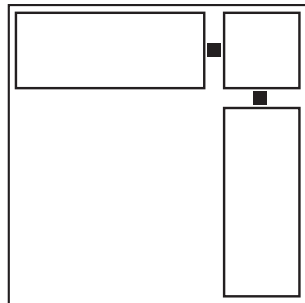
- 1_Pre-assemble transition pieces, adjustment feet, wall connections and profile connections, L-carriers with shelves and horizontal carrier connections with vertical profiles (see left).
- 2_Determine drill holes and drill at first only one hole into the ceiling for the first vertical profile.
- 3_Drill the first carrier profile only loose into the ceiling.
- 4_Align vertical profile with a level, mark the drill hole for the horizontal profile.
- 5_Drill, install the carrier profiles and unscrew the adjustment feet out enough that the vertical carrier profile will be fixed at the ceiling.
- 6_Screw shelves with L-carriers at the bottom loose onto the vertical profile (use a piece of wood for help at the right hand side). **Attention:** If you intend to install a drawer corpus unit, you need to install it now provisorily for the right distance (see chapter: drawer corpus unit without rollers).



INSTALLATION OF CORNERS:



1st possibility



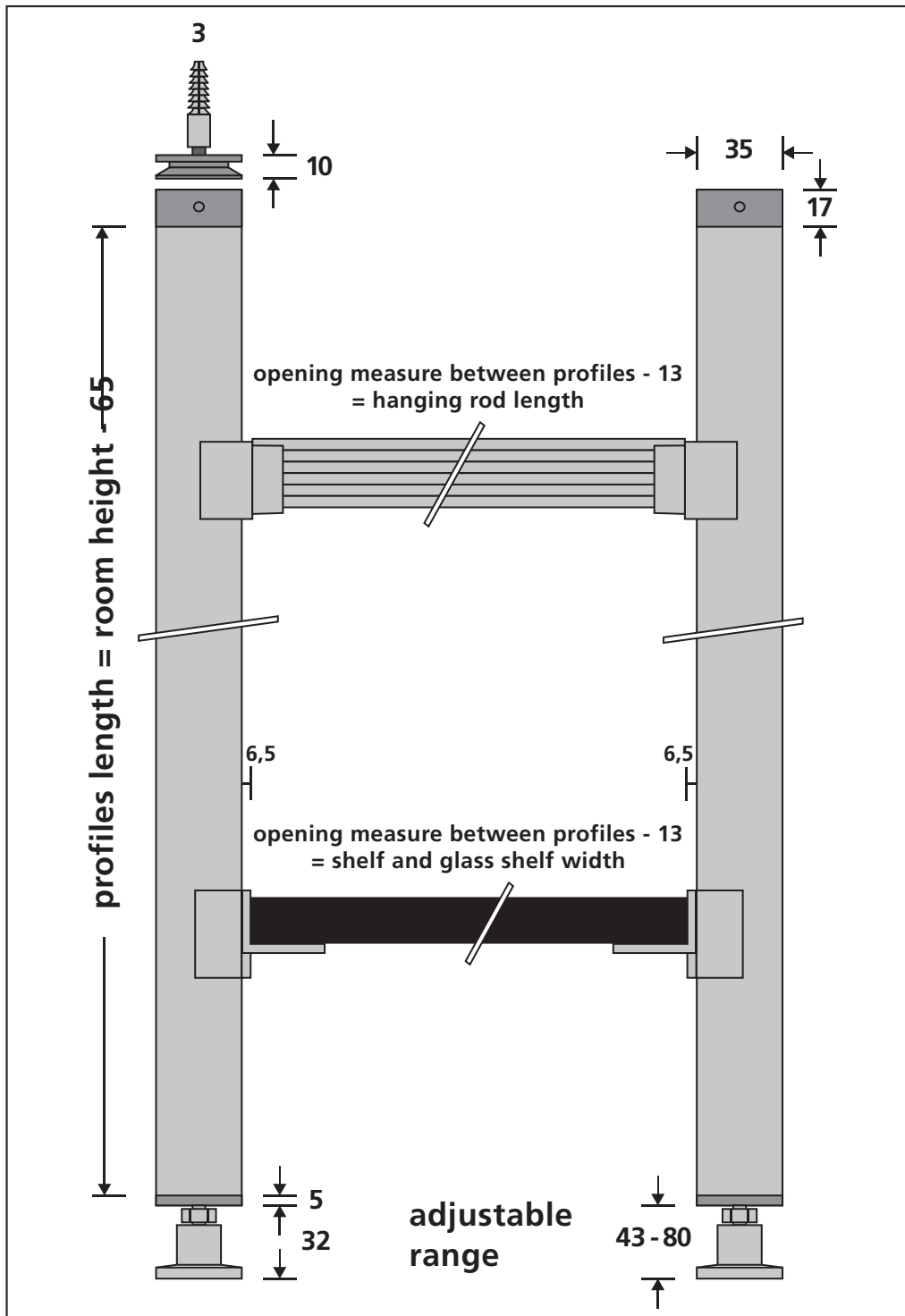
2nd possibility

1st possibility: Mount side by side (position easily to be changed).

2nd possibility: Use shelf connection piece.

_MEASUREMENTS

VERSIONS CEILING INSTALLATION:



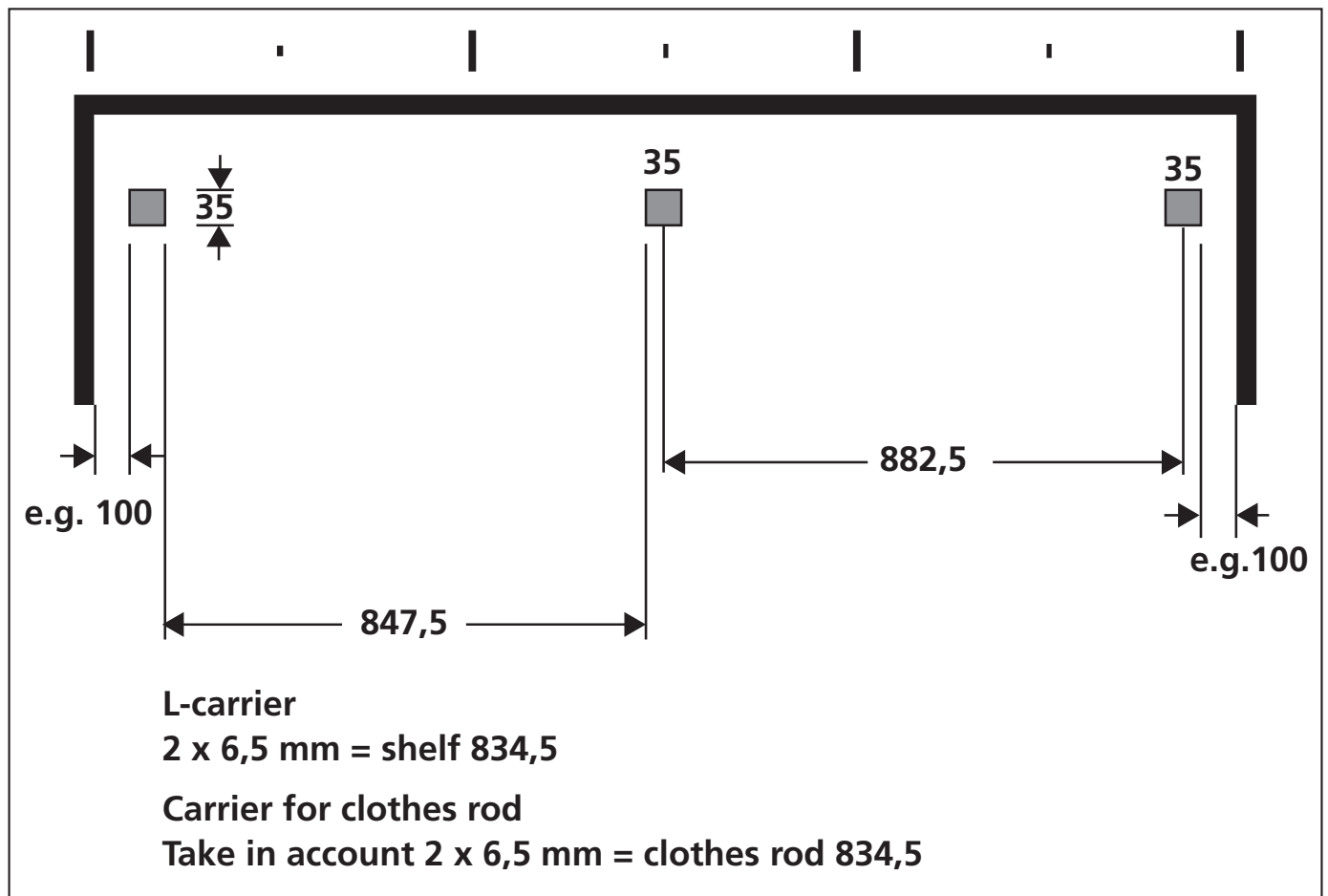
Profile length = room height - 65 mm

Please pay attention to these restrictions. Profiles cannot be adapted later on.

_MEASUREMENTS

EXAMPLE – HOW TO FIND THE RIGHT MEASUREMENTS:

Niche 2 m long (details in millimetres – drawing not to scale).



There is a tolerance of 2 mm for your work – but you should work as exactly as possible – because only small differences might make necessary to drill completely new.

Double check the measures you took, normally walls and ceilings are not even – check the marked points like described in the chapter “Assembly”!

Shelves up to max. 1250 mm (thickness 25 mm); profiles up to max. 3000 mm.

_MEASUREMENTS

OVERVIEW: BENDING OF SHELVES:

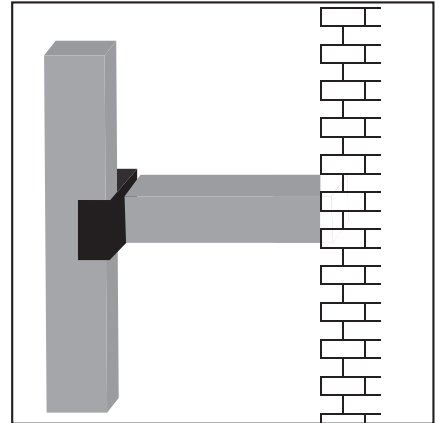
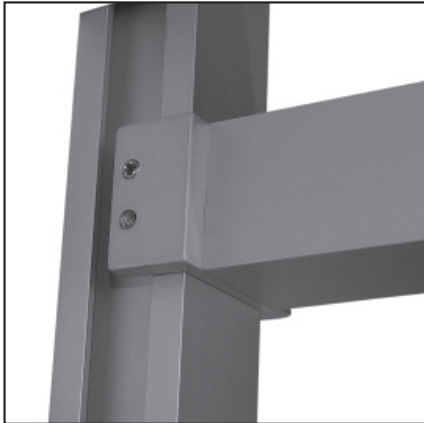
Glass ESG	thickness = 8 mm	length in mm	1250	1125	1000	825	750
	width = 460 mm	deflection in mm	9,6	7,0	4,9	2,8	2,1
	burden linear 55 kg	average utilization in %	33,0	29,7	26,4	21,8	19,8
Glass ESG	thickness = 10 mm	length in mm	1250	1125	1000	825	750
	width = 460 mm	deflection in mm	4,9	3,6	2,5	1,4	1,1
	burden linear 55 kg	average utilization in %	21,1	19,0	16,9	13,9	12,7
Glass ESG	thickness = 8 mm	length in mm	1250	1125	1000	825	750
	width = 600 mm	deflection in mm	7,3	5,4	3,8	2,1	1,6
	burden linear 55 kg	average utilization in %	25,3	22,7	20,2	16,7	15,2
Glass ESG	thickness = 10 mm	length in mm	1250	1125	1000	825	750
	width = 600 mm	deflection in mm	3,8	2,7	1,9	1,1	0,8
	burden linear 55 kg	average utilization in %	16,2	14,6	12,9	10,7	9,7
Glass ESG	thickness = 8mm	length in mm	1250	1125	1000	825	750
	width = 460 mm	deflection in mm	3,5	2,5	1,8	1,0	0,8
	burden linear 20 kg	average utilization in %	12,0	10,8	9,6	7,9	7,2
Glass ESG	thickness = 10 mm	length in mm	1250	1125	1000	825	750
	width = 460 mm	deflection in mm	1,8	1,3	0,9	0,5	0,4
	burden linear 20 kg	average utilization in %	7,7	6,9	6,1	5,1	4,6
Glass ESG	thickness = 8 mm	length in mm	1250	1125	1000	825	750
	width = 600 mm	deflection in mm	2,7	1,9	1,4	0,8	0,6
	burden linear 20 kg	average utilization in %	9,2	8,3	7,4	6,1	5,5
Glass ESG	thickness = 10 mm	length in mm	1250	1125	1000	825	750
	width = 600 mm	deflection in mm	1,4	1,0	0,7	0,4	0,3
	burden linear 20 kg	average utilization in %	5,9	5,3	4,7	3,9	3,5
chipboard	thickness = 25 mm	length in mm	1250	1125	1000	825	750
	width = 460 mm	deflection in mm	9,2	6,7	4,7	2,6	2,0
	burden linear 55 kg	average utilization in %	14,1	12,7	11,3	9,3	8,4
chipboard	thickness = 25 mm	length in mm	1250	1125	1000	825	750
	width = 600 mm	deflection in mm	7,0	5,1	3,6	2,0	1,5
	burden linear 55 kg	average utilization in %	10,8	9,7	8,6	7,1	6,5
chipboard	thickness= 25 mm	length in mm	1250	1125	1000	825	750
	width = 460 mm	deflection in mm	3,3	2,4	1,7	1,0	0,7
	burden linear 20 kg	average utilization in %	5,1	4,6	4,1	3,4	3,1
chipboard	thickness = 25 mm	length in mm	1250	1125	1000	825	750
	width = 600 mm	deflection in mm	2,6	1,9	1,3	0,7	0,6
	burden linear 20 kg	average utilization in %	3,9	3,5	3,1	2,6	2,4

If the glass is damaged, the weight capacity decreases. Do not exceed the maximum weight allowable.

ASSEMBLY IN DETAIL

A_PROFILE CONNECTIONS:

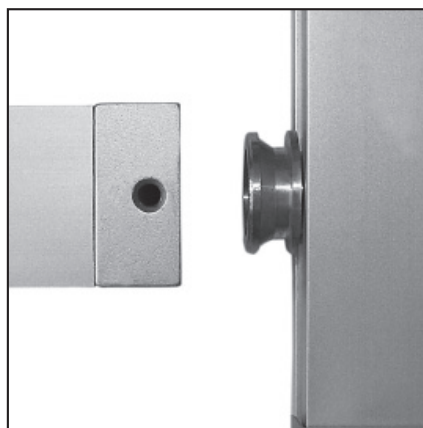
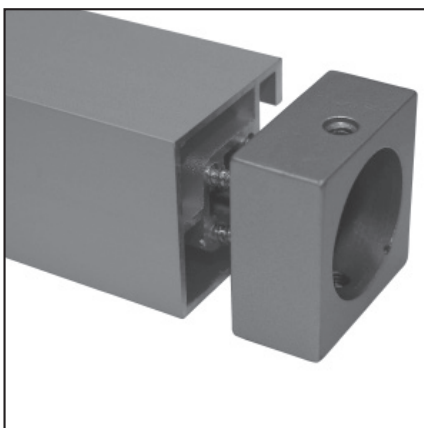
In the following, how to install and how to use the different types of profile connections is explained:



UNIVERSAL CONNECTION:

The universal carrier serves as a lateral connection of a carrier profile and in order to fasten the drawer corpus. By this the system UNO can be connected laterally to the wall. It is an additional support to the wall connection.

- 1_Connect universal connection with short profile carrier (4 tapping screws).
- 2_Connect universal carrier with long profile (2 grub screws – Allen wrench).



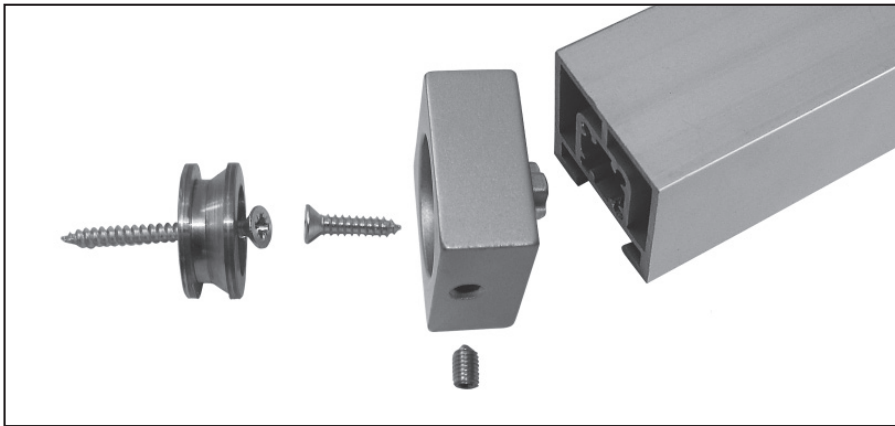
PROFILE CONNECTION:

The direct profile connection is used as height adaptable connection between two profile carriers.

- 1_Push the bushing into the carrier profile - for more stability you can fix the bushing with a long grub screw.
 - 2_Screw the profile connection carrier onto the short profile (4 tapping screws).
 - 3_Put the carrier over the bushing and fix it with 2 short grub screws.
- It is necessary to push the bushing into the profiles early. Otherwise you have to dismantle your whole construction! The grub screw serves only for additional stabilisation in case of extreme strain.

ASSEMBLY IN DETAIL

B_CONNECTION TO CEILING AND TO WALL:



At first the bushing is to be screwed onto the wall. The carrier profile is to be put over the bushing and affixed with 2 grub screws at the connection.

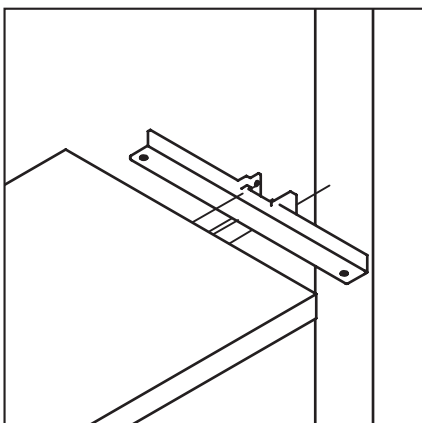
C_ADJUSTABLE FOOT:



The adjustment foot is to be screwed through the transition piece into the connection profile.

By this it is adjustable to height. The transition piece is to be affixed at the carrier profiles with two tapping screws.

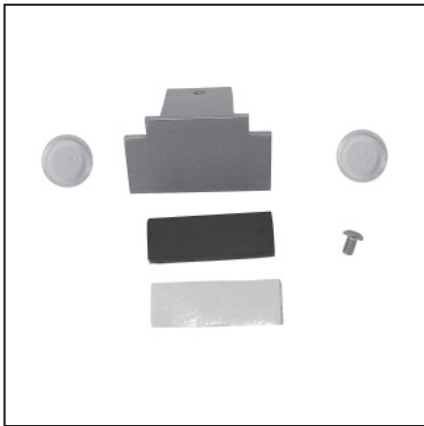
D_L-CARRIERS FOR SHELVES:



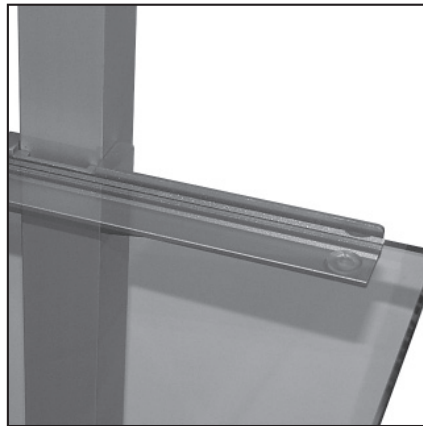
The L-carriers holds the shelves and the drawers. They are to be affixed with an universal carrier at the carrier profile. Please insure that the grub screws are directed towards the wall (turn the second universal carrier at the right hand side). The L-carriers are to be affixed with 2 screws at the universal carrier (i.e. with countersunk screw 4,8 x 19 mm).

_ASSEMBLY IN DETAIL

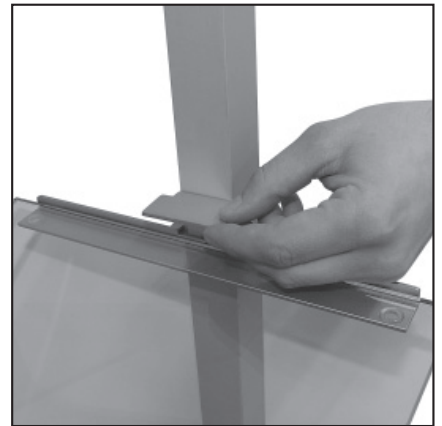
E_CARRIER FOR GLASS SHELF:



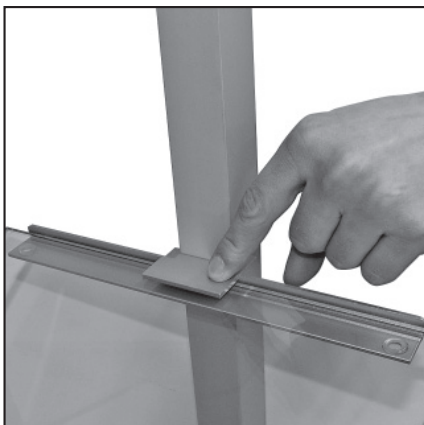
1_



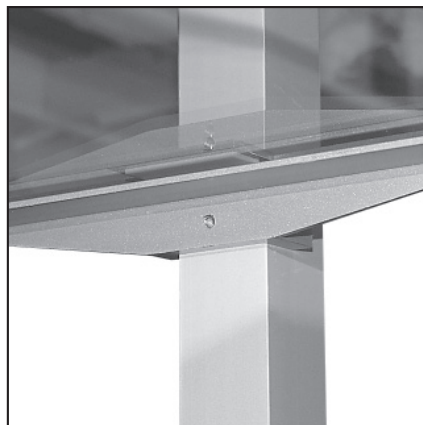
2_



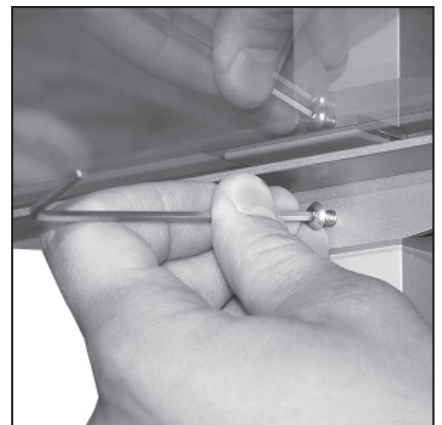
3_



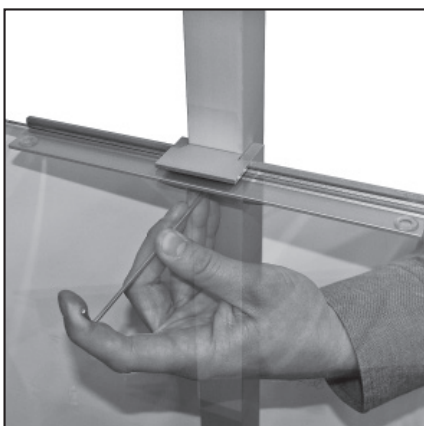
4_



5_



6_



7_

_Adhere the glass supports to the left and right openings in the L_carrier (picture 1_and 2_).

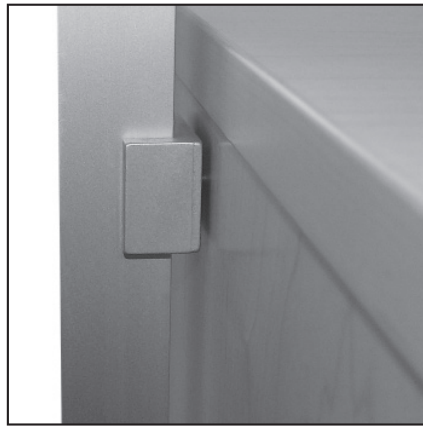
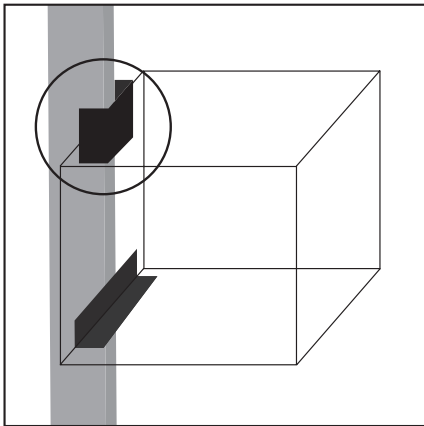
_Depending upon glass thickness, use either the 2 mm cellular rubber for 10 mm glass or 4 mm cellular rubber for 8 mm glass and adhere it under the glass shelf carrier (see detail drawing page 15).

_Then lay the glass plate on the carrier and push the attachment with the cellular rubber from above into the L-carrier. The cellular rubber must be between the glass plate and the attachment (picture 3_and 4_).

_Attach the glass shelf carrier by pushing it down and screwing it in at the same time. Use a 2,5 mm Allen wrench (picture 5_to 7_).

_ASSEMBLY IN DETAIL

F_DRAWER WITHOUT ROLLERS:

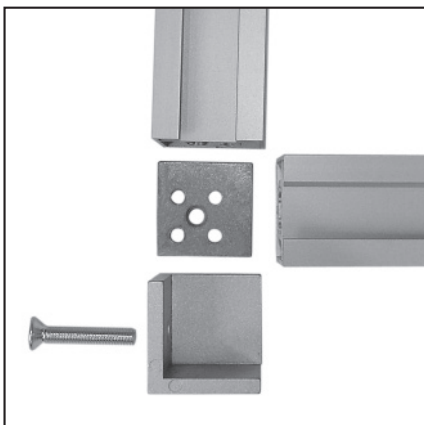


_Pre-attach the bottom L-carriers to both sides (see L-carriers for shelves).

_Determine the position and drill through the top third of the drawer corpus (6,5 – 7 mm). Then attach the top universal carriers to the profile carriers to both sides in that height.

_Insert the drawer corpus unit and screw it to the corpus unit carriers. **Important:** Screw the drawer corpus unit from the inside

G_DRAWER WITH ROLLERS:



Assemble the framework for the drawer corpus unit. For this framework you need 4 profile carriers, 4 corners, screws, 4 rollers.

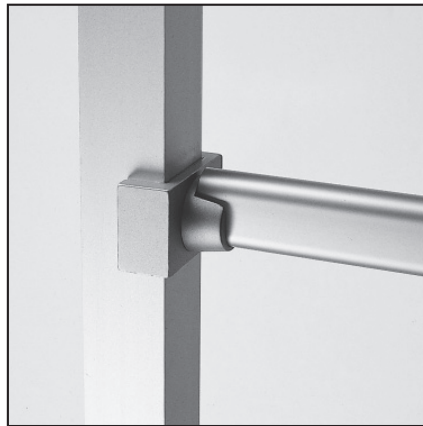
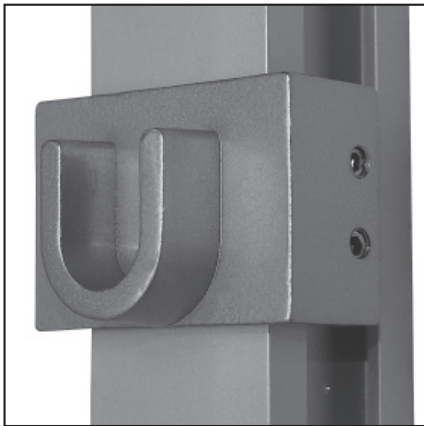
_Drill a 8,5 mm hole for the rollers into the corner connection piece (cube) and cut a screw thread of 10 mm.

_Open the corner cube and screw one part of the cube onto the profile carrier (see picture above).

_Fasten the profiles with 2-3 screws each onto the corpus unit (shift a bit up and down).

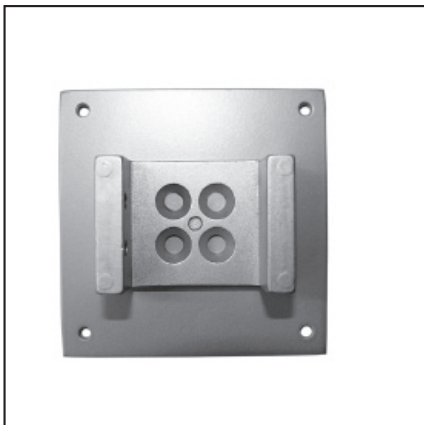
_ASSEMBLY IN DETAIL

H_ACCESSORIES:

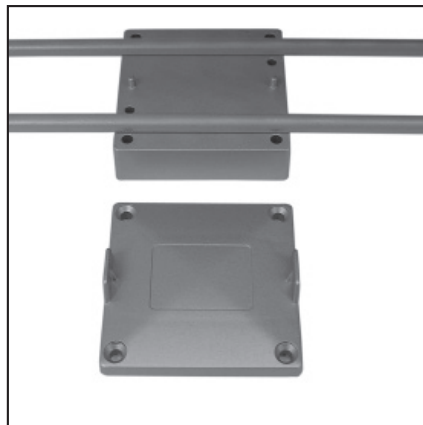


All accessories are to be mounted according to the above-described procedure, i.e. the carriers for the clothes rod are to be mounted in the same way like the universal carriers.

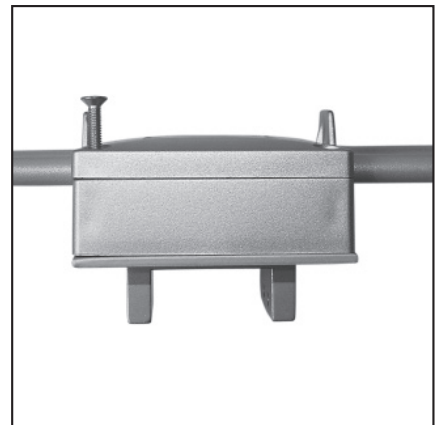
Clothes lifts need for additional stabilisation. **See "profile connection", page 10.**



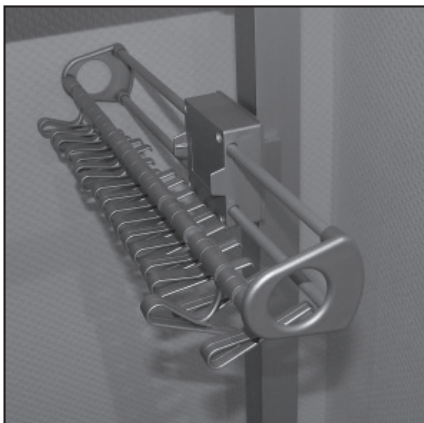
1_



2_



3_



4_

Clothes lifts, belt keeper and universal carrier are to be affixed with the adapters of different sizes.

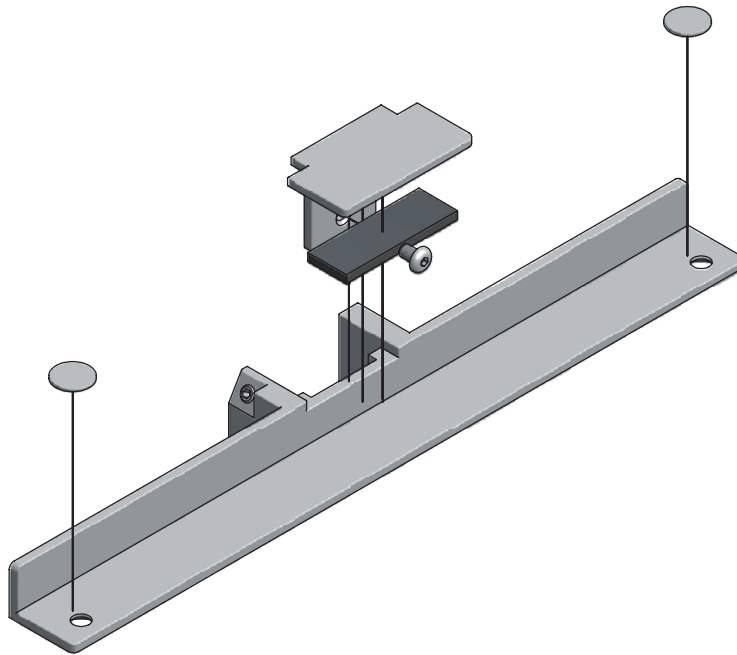
As an example you can see adapter for belt-, tie- and universal keeper above. Please proceed like described in the following:

1_Affix the carrier with the short screws to the adapter.

2_ and 3_Put the tie keeper together, put the adapter onto it and affix it with long screws through the 4 holes.

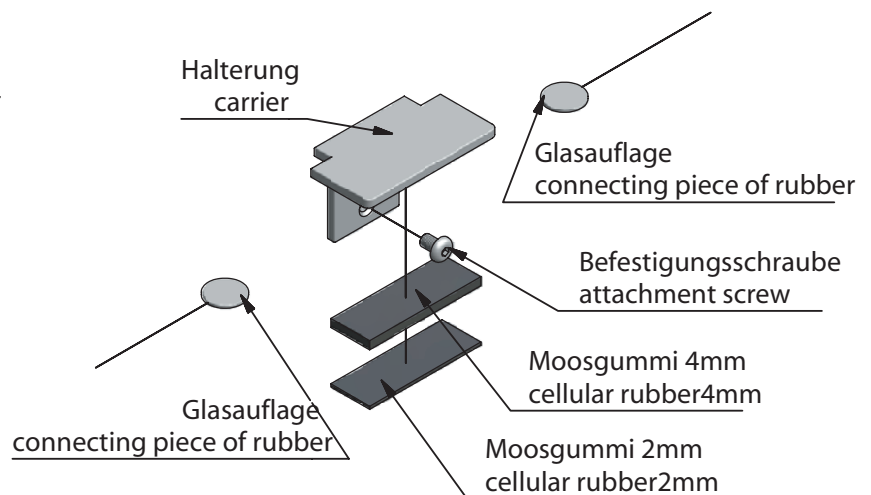
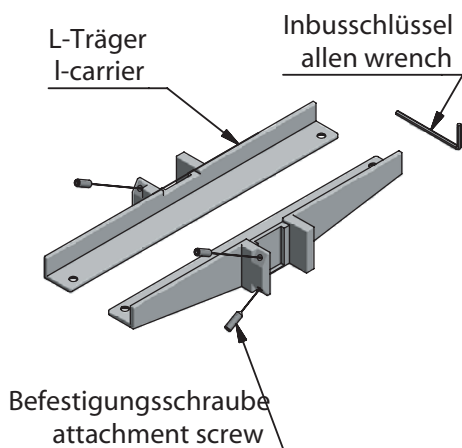
4_Then fasten the tie keeper with the grub screws at the carrier profile (see also assembly universal carrier).

_DETAIL DRAWING



80.40.020
L-Träger
l-carrier

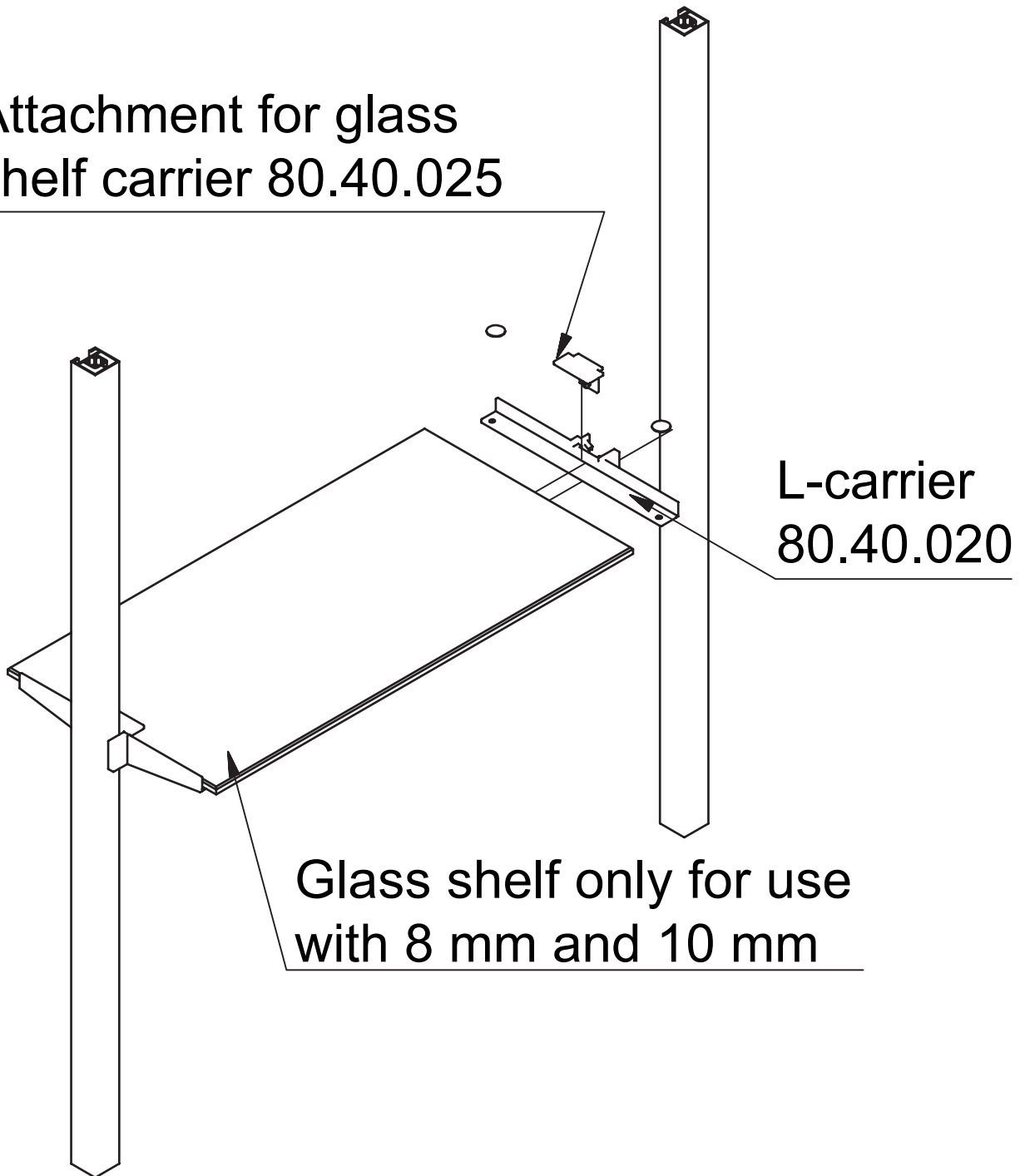
80.40.025
Halterung Glasbodenträger
carrier for glass shelf



_DETAIL DRAWING

ATTACHMENT FOR GLASS SHELF CARRIER

Attachment for glass
shelf carrier 80.40.025



_DETAIL DRAWING

L-CARRIER WITH SHELF

