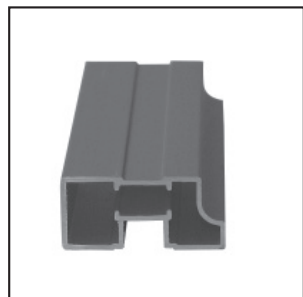


SLIDING DOOR SYSTEMS: ASSEMBLY INSTRUCTIONS

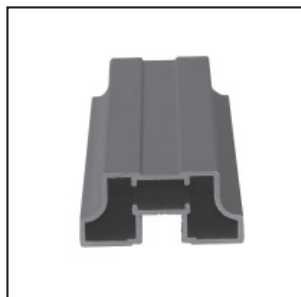
S1500 HANDLE WITH AND WITHOUT DRILLING TEMPLATE

ACCESSORIES:

6th edition Bremen, Dezember 2006



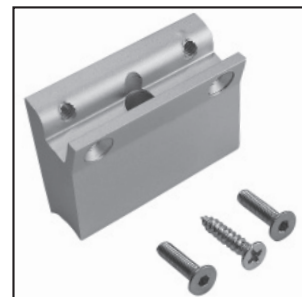
1_



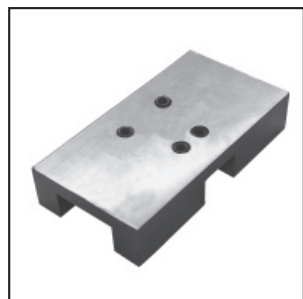
2_



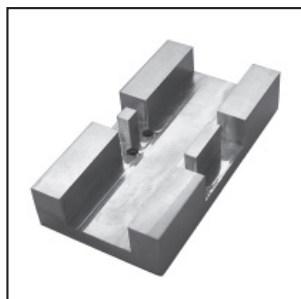
3_



4_



5_



5_



6_



7_

1_Vertical profile series 1500 asym. (13.11.0xx)_

2_Vertical profile series 1500 sym. (13.01.0xx)_

3_Handle fastener S1500 30 mm incl. screws (10.04.029)_to attach the handle.

4_Handle fastener S1500 50 mm incl. screws (10.04.030)_to attach the handle.

5_Drilling template for series 1500 (30.14.055)_one set consists of 2 drilling templates.

6_Handle for series 1500 (14.30.0xx)_is to be attached to the vertical profile with the fastener.

7_End caps for handle (10.04.0xx)_are to be attached to the open ends of the handle.

NOTE:

_Cannot be attached where there will be an overlap of doors or with 90° corner solutions. These handles can only be used with doors that close against another door or the wall.

_Please use the included screws only.

_For doors with these type of handles, the doors are installed after the handle fastener and handle have been mounted.

_So that the handle fasteners are attached in a straight line, mark a straight line on the template after drilling holes on one side so that you then just have to turn the template 180°. Then align the drilling template with the line and drill holes on the other side.

_We recommend, that you follow the instructions for use with the drilling template. For the directions with drilling template, please use both templates (one to attach / drill and the second one to move / drill).

If you prefer to work without drilling templates, page 3 contains the assembly instructions specifically for that.

easy

medium

difficult*

Manufacturing

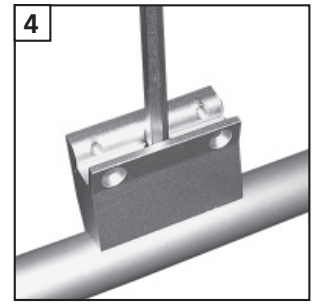
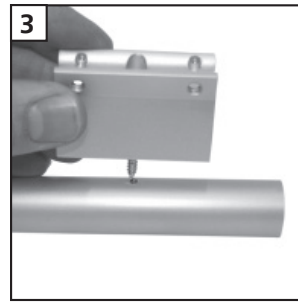
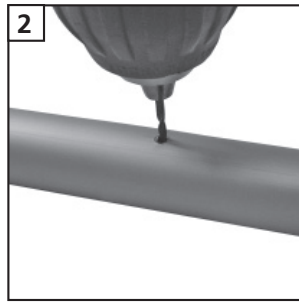
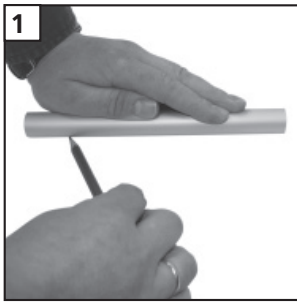


raumplus

*Base for the degree of difficulty is a standard sliding door without slant. This is to be classified as ,easy' in respect of production and installation.

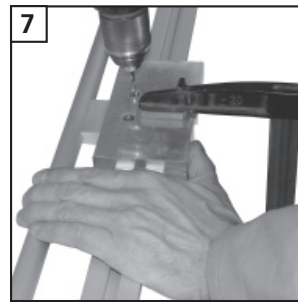
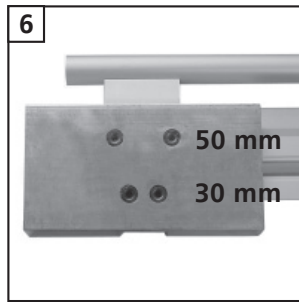
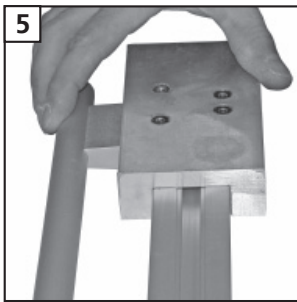
ASSEMBLY INSTRUCTIONS WITH DRILLING TEMPLATE:

Before the vertical profile can be installed, the handle must be mounted first.



_First, mark the location where the fastener should be attached on the handle. For that, the marks must be in one line. It is easiest if you lay the handle on an even surface and placing a pencil flat on the surface, draw a line. Make sure you hold the handle tightly so it doesn't move while drawing the line. (picture **1**).

_Then, using a 2,0 - 3,2 mm drill, drill holes in the marked position, apply the handle (picture **2-3**) and screw the handle in tightly as shown in the picture (picture **4**).

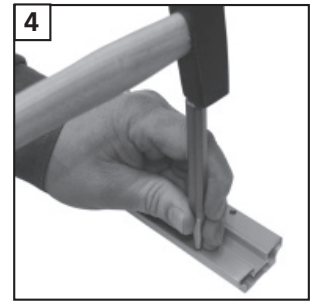
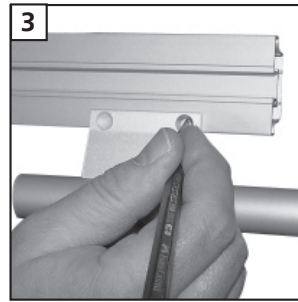
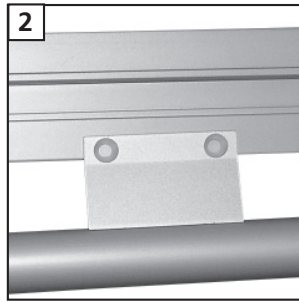
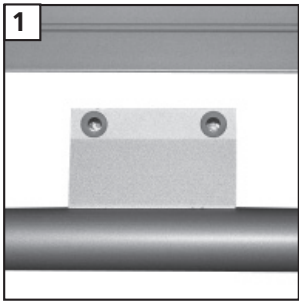


_Apply the handle and fastener to the drilling template and mark where the fastener should later be installed (picture **5**). The finished / panel side of the vertical profile must face up (for the 30 mm fastener use the holes that are close to each other on the template, and for the 50 mm fastener use the others) and use a clamp to keep the base from slipping, screw it tightly together. If you would like to attach more than two fasteners, keep the first template in place and move the second one depending on the quantity of fasteners (e.g. with 3 fasteners move the second template once).

_Using a 4 mm drill, drill two holes per fastener through the vertical profile (pictures **8** and **9**).

_Apply the fastener with the handle to the drilled holes.

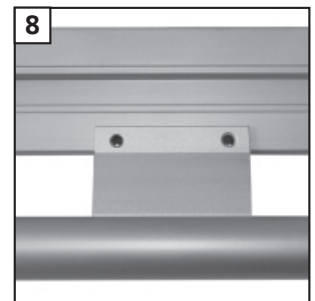
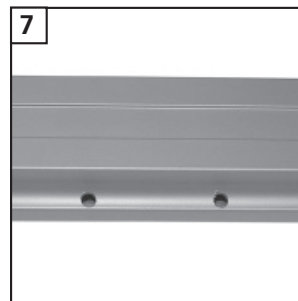
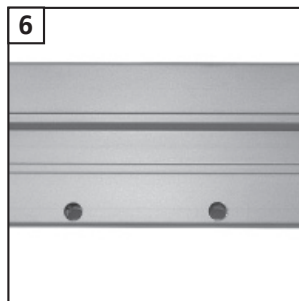
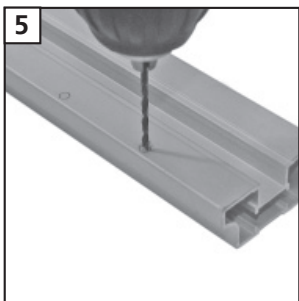
ASSEMBLY INSTRUCTIONS WITHOUT DRILLING TEMPLATE



_Follow the steps 1 to 4 from page two (from assembly with template).

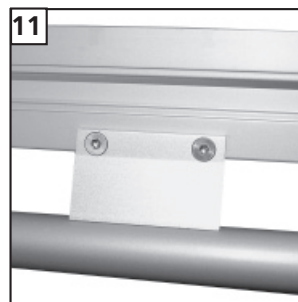
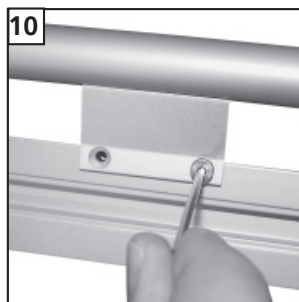
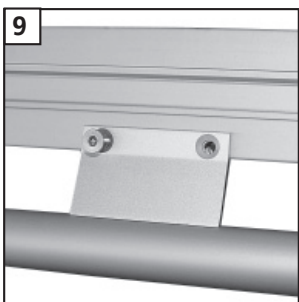
_Put the fastener on the vertical profile and draw marks with a pencil on the position where it should be attached (pictures **1** to **3**).

_So that the holes are drilled in the proper positions, use a centre punch or similar tool to press small indentations into the profile (picture **4**).



_Using a 4 mm drill, drill two holes per fastener through the vertical profile (picture **5** to **7**).

_Apply the fastener with the handle to the drilled holes (picture **8**).



_Using a 2,5 mm Allen key, tighten the screws carefully (pictures **9** and **10**).