

# SLIDING DOOR SYSTEMS: ASSEMBLY INSTRUCTIONS

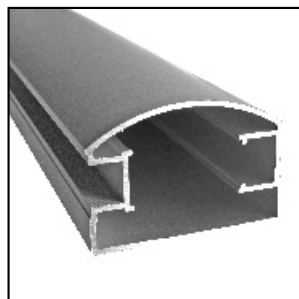
## HANDLE 791

### ACCESSORIES:

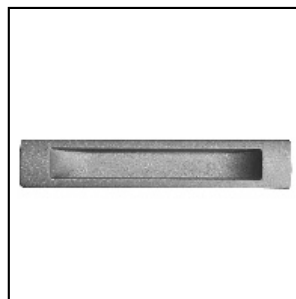
2 st Edition\_October 2006



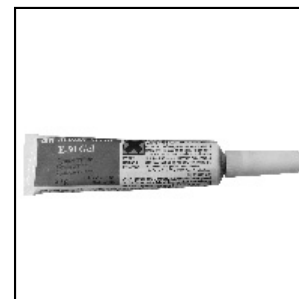
1\_



2\_



3\_



4\_

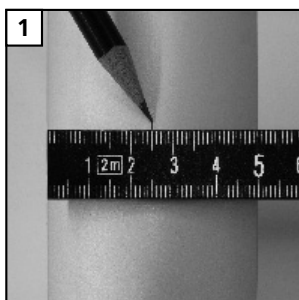
**1\_Vertical profile Series 791 symmetrical (15.91.0xx)\_**

**2\_Vertical profile Series 791 asymmetrical (15.92.0xx)\_**

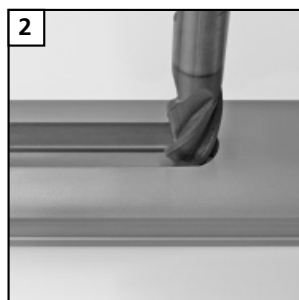
**3\_Handle Series 791 (10.01.083)\_**Is inserted in the vertical profile.

**4\_Adhesive (10.03.162)\_**Attaches the handle to the vertical profile. The contents of the tube can be used for approx. 40 handles.

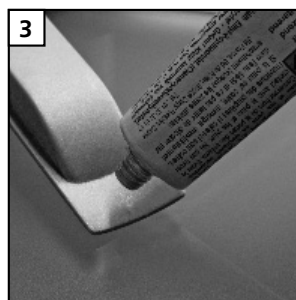
### ASSEMBLY INSTRUCTIONS:



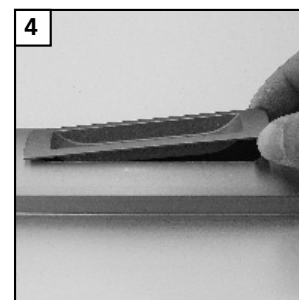
1



2



3



4

Before the vertical profile is installed, the handle has to be inset into the profile.

**1\_**First, determine the height of the handle position on the vertical profile series 791. Then measure the middle of the profile and mark it with a pencil.

**2\_**Mill a 121.00 mm x 18.00 mm opening (see detail drawings – back) in the profile with a professional tool and deburr it.

**3\_ and 4\_**Affix adhesive to the back of the handle and place it into the milled opening and let it dry. The adhesive surface must be dry and free of dust, oil, parting agents and other impurities.

easy

medium

difficult\*

Manufacturing



**raumplus**

\*Base for the degree of difficulty is a standard sliding door without slant. This is to be classified as ‚easy‘ in respect of production and installation.